

We encourage everyone to view the meeting live via YouTube.

***Leavenworth County
Board of County Commissioners***

Regular Meeting Agenda
300 Walnut Street, Suite 225
Leavenworth, KS 66048
August 30, 2023
9:00 a.m.

- I. CALL TO ORDER
- II. PLEDGE OF ALLEGIANCE/MOMENT OF SILENCE
- III. ROLL CALL
- IV. PUBLIC COMMENT: Public Comment shall be limited to 15 minutes at the beginning of each meeting for agenda items **only** and limited to three minutes per person. Comments at the end of the meeting shall be open to any topic of general interest to the Board of County Commissioners and limited to five minutes per person. There should be no expectation of interaction by the Commission during this time.

Anyone wishing to make comments either on items on the agenda or not are encouraged to provide their comments in writing no later than 8:00 AM the Monday immediately preceding the meeting. These comments will be included in the agenda packet for everyone to access and review. This allows the Commission to have time to fully consider input and request follow up if needed prior to the meeting.
- V. ADMINISTRATIVE BUSINESS:
- VI. CONSENT AGENDA: The items on the Consent Agenda are considered by staff to be routine business items. Approval of the items may be made by a single motion, seconded, and a majority vote with no separate discussion of any item listed. Should a member of the Governing Body desire to discuss any item, it will be removed from the Consent Agenda and considered separately.
 - a) Approval of the minutes of the meeting of August 23, 2023
 - b) Approval of the schedule for the week September 4, 2023
 - c) Approval of the check register

d) Approve and sign the OCB's

VII. FORMAL BOARD ACTION:

a) Case Number DEV-23-109 a temporary special use permit for Whiskey Ridge Event Center.

- **OPEN PUBLIC HEARING**
- **CLOSE PUBLIC HEARING**
- Consider a motion to approve Case Number DEV-23-109 a temporary special use permit for Whiskey Ridge Event Center.

b) Consider a motion to approve the Council on Aging to enter a memorandum of agreement with the University of Kansas KU Jayhawk Global for continuing education classes for the Leisure and Learning program.

VIII. PRESENTATIONS AND DISCUSSION ITEMS: presentations are materials of general concern where no action or vote is requested or anticipated.

- a) Executive session to discuss attorney/client privileges
- b) Executive session to discuss non-elected personnel

IX. ADDITIONAL PUBLIC COMMENT IF NEEDED

X. ADJOURNMENT

WORK SESSION TO DISCUSS EDITS TO THE KANSAS ASSOCIATION OF COUNTIES ARTICLE REGARDING LAVTR FOR POSSIBLE SUBMISSION TO THE LEAVENWORTH TIMES.

LEAVENWORTH COUNTY COMMISSIONERS MEETING SCHEDULE

Monday, August 28, 2023

Tuesday, August 29, 2023

Wednesday, August 30, 2023

9:00 a.m. Leavenworth County Commission meeting
• Commission Meeting Room, 300 Walnut, Leavenworth KS

Thursday, August 31, 2023

Friday, September 1, 2023

ALL SUCH OTHER BUSINESS THAT MAY COME BEFORE THE COMMISSION

ALL MEETINGS ARE OPEN TO THE PUBLIC

COMMENTS SHOULD BE OF GENERAL INTEREST OF THE PUBLIC AND SUBJECT TO THE RULES OF DECORUM

*****August 23, 2023 *****

The Board of County Commissioners met in a regular session on Wednesday, August 23, 2023. Commissioner Kaaz, Commissioner Doug Smith, Commissioner Mike Smith, Commissioner Culbertson and Commissioner Stieben are present; Also present: Mark Loughry, County Administrator; David Van Parys, Senior County Counselor; Linda Scheer, County Clerk's Office; Jamie Miller, EMS Director; John Richmeier, Leavenworth Times

PUBLIC COMMENT:

There were no public comments.

ADMINISTRATIVE BUSINESS:

Jamie Miller requested approval of a workforce development grant application for retention and recruitment for public health.

A motion was made by Commissioner Doug Smith and seconded by Commissioner Mike Smith to authorize Mr. Miller to apply for the grant for \$154,000.00.

Motion passed, 5-0.

Commissioner Doug Smith recognized the Leavenworth County Treasurer's audit for scoring highest in the state.

A motion was made by Commissioner Culbertson and seconded by Commissioner Mike Smith to accept the consent agenda for Wednesday, August 23, as presented.

Motion passed, 5-0.

Resolution 2023-22 levying a property tax rate exceeding the revenue neutral rate for the tax year of 2023 was presented.

Mark Loughry presented a budget presentation.

A motion was made by Commissioner Stieben and seconded by Commissioner Doug Smith to open the public hearing for Resolution 2023-22 and the Leavenworth County Budget.

Motion passed, 5-0.

Mike Mathews, Eric McMillin, Erin Ellsworth, Jeffrey Boddy, John Cash, Paul Cowan, Douglas Palmer, Sherri Grogan, Maddie Waldeck, Tom Trowbridge and Joe Matzeder spoke.

Commissioner Kaaz closed the public hearing.

A motion was made by Commissioner Stieben to reduce the Fair board by \$1,800, the Fair board premium amount reduced by \$2,600.00, reduce the CASA board from \$70,000 to \$50,000 in funding for a \$20,000 reduction, the Alliance Against Family Violence from a \$40,000 to a \$30,000 request for a \$10,000 reduction and reduce the Leavenworth County Port Authority from \$149,000 to \$100,000 which is a \$49,000 reduction for a total reduction in outside agency funding of \$99,600.

Motion dies for lack of second.

A motion was made by Commissioner Stieben and seconded by Commissioner Mike Smith to reduce the Fair Board by \$18,000 and the Fair Board premium by \$2,600 for a reduction of \$20,600.

Motion passed, 5-0.

A motion was made by Commissioner Stieben and seconded by Commissioner Doug Smith to reduce CASA by \$20,000, Alliance by \$10,000 and the Leavenworth County Port Authority by \$49,000 for a total of \$79,000.

Motion failed, 3-2 Commissioners Culbertson, Mike Smith and Kaaz voting nay.

A motion was made by Commissioner Stieben to retain the administrative staff of the County Attorney's Office to 25 employees with a savings of \$60,000 and reducing the Sheriff's carryover from \$447,000 by \$200,000 with a total of \$260,000 in savings.

Motion dies for a lack of second.

A motion was made by Commissioner Stieben and seconded by Commissioner Mike Smith to reduce the overall mill levy by one sixteenth which results in \$62,000 worth of funding reduction to offset the increase in the mill levy in the service roads.

Motion passed, 3-2 Commissioners Culbertson and Kaaz voting nay.

A motion was made by Commissioner Doug Smith and seconded by Commissioner Mike Smith that Riverside Resources and Sparrow Clinic that we don't fund them.

Motion passed, 3-2 Commissioners Kaaz and Stieben voting nay.

A motion was made by Commissioner Doug Smith to cut the Alliance and cut CASA, cut Soil Conservation except for what the State match is and Economic Development. The motion was seconded by Commissioner Stieben for purpose of discussion.

Motion failed, 4-1, Commissioners Culbertson, Mike Smith, Kaaz and Stieben voting nay.

A motion was made by Commissioner Doug Smith and seconded by Commissioner Culbertson to approve Resolution 2023-22 levying a property tax rate exceeding the revenue neutral rate.

Motion passed, 4-1, Commissioner Stieben voting nay.

A motion was made by Commissioner Culbertson and seconded by Commissioner Mike Smith to approve the Leavenworth County budget for 2024 as amended.

Motion passed, 4-1, Commissioner Stieben voting nay.

Resolution 2023-23, levying a property tax rate exceeding the revenue neutral rate for the Leavenworth County Special Other Funds budget and the Leavenworth County Special Other Funds budget was presented.

Commissioner Kaaz opened the public hearing.

A motion was made by Commissioner Kaaz and seconded by Commissioner Mike Smith to open the public hearing for the exceeding the revenue neutral rate for the Leavenworth County Special Other Funds and the Leavenworth County Special Other Funds budget.

Motion passed, 5-0.

Mike Mathews, Eric McMillin, Joe Matzeder and Byron McFee spoke.

Commissioner Kaaz closed the public hearing.

A motion was made by Commissioner Culbertson and seconded by Commissioner Mike Smith to approve Resolution 2023-23 a resolution to levy a property tax rate exceeding the revenue neutral rate for Leavenworth County Special Other Funds budget.

Motion passed, 4-1 Commissioner Stieben voting nay.

A motion was made by Commissioner Doug Smith and seconded by Commissioner Culbertson to approve the Leavenworth County Special Other Funds budget for 2024.

Motion passed, 4-1 Commissioner Stieben voting nay.

Bill Noll presented a supplemental agreement with KDOT for maintenance costs on George Road.

A motion was made by Commissioner Mike Smith and seconded by Commissioner Stieben to approve a supplemental agreement with KDOT for maintenance costs on George Road.

Motion passed, 5-0.

Commissioner Culbertson met with Representative Bueheler to discuss LAVTR, PILOT checks, SCR Bill 1611, Bridge 152 project and House Bill 17. He will also be meeting with Jake LaTurner to discuss the same topics.

Commissioner Mike Smith thanked the Human Resources department during open enrollment and reminded the Board that the evaluation for the County Administrator is due today.

Commissioner Doug Smith attended the Kansas Livestock Beef Improvement Dinner and the MARC meeting. He will attend the Basehor City Council budget meeting this evening and the Fairmount Township meeting tomorrow night.

Commissioner Stieben met with Jake LaTurner at the Elephant Club. The Property Tax Task Force will meet September 7 at the Tonganoxie Public Library.

Commissioner Kaaz attended the Workforce Partnership Board of Directors and CEO meeting yesterday. She also participated in the Guidance Center Advisory Board meeting and a Transit Authority meeting.

A motion was made by Commissioner Mike Smith and seconded by Commissioner Culbertson to adjourn.

Motion passed, 5-0.

The Board adjourned at 10:52 a.m.

LEAVENWORTH COUNTY COMMISSIONERS MEETING SCHEDULE

Monday, September 4, 2023 THE COURTHOUSE WILL BE CLOSED IN OBSERVANCE OF LABOR DAY

Tuesday, September 5, 2023

9:30 a.m. Veterans Treatment Court Opening Ceremony
• Leavenworth Justice Center, Courtroom #1

Wednesday, September 6, 2023

9:00 a.m. Leavenworth County Commission meeting
• Commission Meeting Room, 300 Walnut, Leavenworth KS

Thursday, September 7, 2023

Friday, September 8, 2023

ALL SUCH OTHER BUSINESS THAT MAY COME BEFORE THE COMMISSION

ALL MEETINGS ARE OPEN TO THE PUBLIC

COMMENTS SHOULD BE OF GENERAL INTEREST OF THE PUBLIC AND SUBJECT TO THE RULES OF DECORUM

START DATE: 08/19/2023 END DATE: 08/25/2023

TYPES OF CHECKS SELECTED: * ALL TYPES

			P.O.NUMBER	CHECK#					
20588	ADVANTAGE	ADVANTAGE PRINTING	336168	104495 AP	08/25/2023	3-001-5-14-228	ACCT 108 - BUDGET BOOKS	190.00	
20588	ADVANTAGE	ADVANTAGE PRINTING	336168	104495 AP	08/25/2023	3-001-5-19-301	ACCT 514 DIST CT CSO BUS/APPT	235.00	
							*** VENDOR	20588 TOTAL	425.00
249	AMBERWELL	ATCHISON HOSPITAL	336169	104496 AP	08/25/2023	3-001-5-07-206	LEAV CO SHERIFF NEW EMPLOYEE T	917.00	
249	AMBERWELL	ATCHISON HOSPITAL	336169	104496 AP	08/25/2023	3-001-5-28-212	HUMAN RESOURCES TESTING	228.00	
							*** VENDOR	249 TOTAL	1,145.00
6049	AT&T	AT&T	336132	104475 AP	08/23/2023	3-001-5-18-213	913 A02-07248538 ACCESS FEES	1,755.67	
1061	B & W FIRE LLC	B & W FIRE LLC	336170	104497 AP	08/25/2023	3-001-5-07-208	001245 JAIL ANNUAL FIRE EXT IN	473.00	
1061	B & W FIRE LLC	B & W FIRE LLC	336170	104497 AP	08/25/2023	3-001-5-32-266	001245 JUSTICE CENTER ANNUAL F	1,933.80	
							*** VENDOR	1061 TOTAL	2,406.80
22369	BAMFORD FI	BAMFORD FIRE SPRINKLER	336171	104498 AP	08/25/2023	3-001-5-31-297	725 LAMING - ANNUAL INSP WEST	296.00	
24545	CDW GOVERN	CDW GOVERNMENT INC	336133	104476 AP	08/23/2023	3-001-5-07-362	1106763 LV SHERIFF-DISPLAY, WA	182.38	
24545	CDW GOVERN	CDW GOVERNMENT INC	336133	104476 AP	08/23/2023	3-001-5-07-362	1106763 LV SHERIFF-DISPLAY, WA	182.38	
24545	CDW GOVERN	CDW GOVERNMENT INC	336133	104476 AP	08/23/2023	3-001-5-07-362	1106763 LV SHERIFF-DISPLAY, WA	182.38	
24545	CDW GOVERN	CDW GOVERNMENT INC	336176	104503 AP	08/25/2023	3-001-5-18-301	3773122 THERMAL HEATSINK GREAS	7.73	
							*** VENDOR	24545 TOTAL	190.11
5637	CLEARWATER ENTERPRIS	CLEARWATER ENTERPRISES,LLC	336134	104477 AP	08/23/2023	3-001-5-14-220	20642-12019039952307 GAS SERVI	642.24	
5637	CLEARWATER ENTERPRIS	CLEARWATER ENTERPRISES,LLC	336134	104477 AP	08/23/2023	3-001-5-32-392	20642-12019296052307 GAS SERVI	1,273.03	
							*** VENDOR	5637 TOTAL	1,915.27
648	COMMERCE BANK-COMMER	COMMERCE BANK-COMMERCIAL CARDS	336178	104510 AP	08/25/2023	3-001-5-01-202	BOCC/LEGAL:RM:SHIRTS,COINS,LOD	310.00	
648	COMMERCE BANK-COMMER	COMMERCE BANK-COMMERCIAL CARDS	336178	104510 AP	08/25/2023	3-001-5-01-212	BOCC/LEGAL:RM:SHIRTS,COINS,LOD	199.51	
648	COMMERCE BANK-COMMER	COMMERCE BANK-COMMERCIAL CARDS	336178	104510 AP	08/25/2023	3-001-5-01-213	BOCC/LEGAL:RM:SHIRTS,COINS,LOD	341.78	
648	COMMERCE BANK-COMMER	COMMERCE BANK-COMMERCIAL CARDS	336178	104510 AP	08/25/2023	3-001-5-01-308	BOCC/LEGAL:RM:SHIRTS,COINS,LOD	177.50	
648	COMMERCE BANK-COMMER	COMMERCE BANK-COMMERCIAL CARDS	336178	104510 AP	08/25/2023	3-001-5-01-308	BOCC/LEGAL:RM:SHIRTS,COINS,LOD	1,416.50	
648	COMMERCE BANK-COMMER	COMMERCE BANK-COMMERCIAL CARDS	336178	104510 AP	08/25/2023	3-001-5-02-212	IRON MOUNTAIN SHREDDING CTHSE	16.65	
648	COMMERCE BANK-COMMER	COMMERCE BANK-COMMERCIAL CARDS	336178	104510 AP	08/25/2023	3-001-5-02-213	AMAZON-LABELS FOR RNR, ELECTIO	59.08	
648	COMMERCE BANK-COMMER	COMMERCE BANK-COMMERCIAL CARDS	336178	104510 AP	08/25/2023	3-001-5-02-301	CO CLERK:ACCTPAY ENVELOPES	48.10	
648	COMMERCE BANK-COMMER	COMMERCE BANK-COMMERCIAL CARDS	336178	104510 AP	08/25/2023	3-001-5-04-211	ROD - KAC HOTEL, REFUND CONF H	437.75	
648	COMMERCE BANK-COMMER	COMMERCE BANK-COMMERCIAL CARDS	336178	104510 AP	08/25/2023	3-001-5-04-211	ROD - KAC HOTEL, REFUND CONF H	364.40	
648	COMMERCE BANK-COMMER	COMMERCE BANK-COMMERCIAL CARDS	336178	104510 AP	08/25/2023	3-001-5-05-202	EMS:PM,MW,MS,CJ:VEH MAINT/FIEL	39.75	
648	COMMERCE BANK-COMMER	COMMERCE BANK-COMMERCIAL CARDS	336178	104510 AP	08/25/2023	3-001-5-05-209	EMS FIELD/OFC SUPPLY,VEH MAINT	210.00	
648	COMMERCE BANK-COMMER	COMMERCE BANK-COMMERCIAL CARDS	336178	104510 AP	08/25/2023	3-001-5-05-216	EMS FIELD/OFC SUPPLY,VEH MAINT	442.36	
648	COMMERCE BANK-COMMER	COMMERCE BANK-COMMERCIAL CARDS	336178	104510 AP	08/25/2023	3-001-5-05-282	EMS FIELD/OFC SUPPLY,VEH MAINT	363.31	
648	COMMERCE BANK-COMMER	COMMERCE BANK-COMMERCIAL CARDS	336178	104510 AP	08/25/2023	3-001-5-05-301	EMS:PM,MW,MS,CJ:VEH MAINT/FIEL	54.17	
648	COMMERCE BANK-COMMER	COMMERCE BANK-COMMERCIAL CARDS	336178	104510 AP	08/25/2023	3-001-5-05-301	EMS FIELD/OFC SUPPLY,VEH MAINT	935.67	
648	COMMERCE BANK-COMMER	COMMERCE BANK-COMMERCIAL CARDS	336178	104510 AP	08/25/2023	3-001-5-05-302	EMS:PM,MW,MS,CJ:VEH MAINT/FIEL	21.55	
648	COMMERCE BANK-COMMER	COMMERCE BANK-COMMERCIAL CARDS	336178	104510 AP	08/25/2023	3-001-5-05-306	EMS:PM,MW,MS,CJ:VEH MAINT/FIEL	20.00	
648	COMMERCE BANK-COMMER	COMMERCE BANK-COMMERCIAL CARDS	336178	104510 AP	08/25/2023	3-001-5-05-306	EMS:PM,MW,MS,CJ:VEH MAINT/FIEL	316.52	
648	COMMERCE BANK-COMMER	COMMERCE BANK-COMMERCIAL CARDS	336178	104510 AP	08/25/2023	3-001-5-05-306	EMS:PM,MW,MS,CJ:VEH MAINT/FIEL	344.70	
648	COMMERCE BANK-COMMER	COMMERCE BANK-COMMERCIAL CARDS	336178	104510 AP	08/25/2023	3-001-5-05-306	EMS FIELD/OFC SUPPLY,VEH MAINT	2,238.68	
648	COMMERCE BANK-COMMER	COMMERCE BANK-COMMERCIAL CARDS	336178	104510 AP	08/25/2023	3-001-5-05-350	EMS:PM,MW,MS,CJ:VEH MAINT/FIEL	133.50	
648	COMMERCE BANK-COMMER	COMMERCE BANK-COMMERCIAL CARDS	336178	104510 AP	08/25/2023	3-001-5-05-350	EMS:PM,MW,MS,CJ:VEH MAINT/FIEL	190.41	
648	COMMERCE BANK-COMMER	COMMERCE BANK-COMMERCIAL CARDS	336178	104510 AP	08/25/2023	3-001-5-05-350	EMS FIELD/OFC SUPPLY,VEH MAINT	978.20	
648	COMMERCE BANK-COMMER	COMMERCE BANK-COMMERCIAL CARDS	336178	104510 AP	08/25/2023	3-001-5-05-381	EMS:PM,MW,MS,CJ:VEH MAINT/FIEL	62.80	
648	COMMERCE BANK-COMMER	COMMERCE BANK-COMMERCIAL CARDS	336178	104510 AP	08/25/2023	3-001-5-05-381	EMS:PM,MW,MS,CJ:VEH MAINT/FIEL	145.15	
648	COMMERCE BANK-COMMER	COMMERCE BANK-COMMERCIAL CARDS	336178	104510 AP	08/25/2023	3-001-5-05-381	EMS FIELD/OFC SUPPLY,VEH MAINT	8,100.14	
648	COMMERCE BANK-COMMER	COMMERCE BANK-COMMERCIAL CARDS	336178	104510 AP	08/25/2023	3-001-5-05-383	EMS:PM,MW,MS,CJ:VEH MAINT/FIEL	58.23	
648	COMMERCE BANK-COMMER	COMMERCE BANK-COMMERCIAL CARDS	336178	104510 AP	08/25/2023	3-001-5-05-383	EMS:PM,MW,MS,CJ:VEH MAINT/FIEL	87.68	
648	COMMERCE BANK-COMMER	COMMERCE BANK-COMMERCIAL CARDS	336178	104510 AP	08/25/2023	3-001-5-06-216	AT&T MOBILITY - MIFI 1341	86.46	
648	COMMERCE BANK-COMMER	COMMERCE BANK-COMMERCIAL CARDS	336178	104510 AP	08/25/2023	3-001-5-06-220	PLANNING:KA:COMMISSION MEETING	17.94	
648	COMMERCE BANK-COMMER	COMMERCE BANK-COMMERCIAL CARDS	336178	104510 AP	08/25/2023	3-001-5-06-306	PLANNING:SS:SAFETY, CODE ENF	70.93	
648	COMMERCE BANK-COMMER	COMMERCE BANK-COMMERCIAL CARDS	336178	104510 AP	08/25/2023	3-001-5-07-202	SO:MULTI:TNG,JAIL/MAINT/INMATE	75.00	

START DATE: 08/19/2023 END DATE: 08/25/2023

TYPES OF CHECKS SELECTED: * ALL TYPES

				P.O.NUMBER	CHECK#						
648	COMMERCE BANK-COMMER	COMMERCE BANK-COMMERCIAL CARDS	336178	104510 AP	08/25/2023	3-001-5-07-202	SO:MULTI:TNG, JAIL/MAINT/INMATE	520.00			
648	COMMERCE BANK-COMMER	COMMERCE BANK-COMMERCIAL CARDS	336178	104510 AP	08/25/2023	3-001-5-07-202	SO:MULTI:TNG, JAIL/MAINT/INMATE	1,275.00			
648	COMMERCE BANK-COMMER	COMMERCE BANK-COMMERCIAL CARDS	336178	104510 AP	08/25/2023	3-001-5-07-202	SO:MULTI:TNG, JAIL/MAINT/INMATE	55.00			
648	COMMERCE BANK-COMMER	COMMERCE BANK-COMMERCIAL CARDS	336178	104510 AP	08/25/2023	3-001-5-07-210	AT&T LVSO 1313	286.49			
648	COMMERCE BANK-COMMER	COMMERCE BANK-COMMERCIAL CARDS	336178	104510 AP	08/25/2023	3-001-5-07-213	MAGAHA:EMPG, VEH MAINT	42.00			
648	COMMERCE BANK-COMMER	COMMERCE BANK-COMMERCIAL CARDS	336178	104510 AP	08/25/2023	3-001-5-07-213	SO:MULTI:TNG, JAIL/MAINT/INMATE	8.47			
648	COMMERCE BANK-COMMER	COMMERCE BANK-COMMERCIAL CARDS	336178	104510 AP	08/25/2023	3-001-5-07-213	SO:MULTI:TNG, JAIL/MAINT/INMATE	41.97			
648	COMMERCE BANK-COMMER	COMMERCE BANK-COMMERCIAL CARDS	336178	104510 AP	08/25/2023	3-001-5-07-219	SO:MULTI:TNG, JAIL/MAINT/INMATE	16.68			
648	COMMERCE BANK-COMMER	COMMERCE BANK-COMMERCIAL CARDS	336178	104510 AP	08/25/2023	3-001-5-07-219	SO:MULTI:TNG, JAIL/MAINT/INMATE	837.00			
648	COMMERCE BANK-COMMER	COMMERCE BANK-COMMERCIAL CARDS	336178	104510 AP	08/25/2023	3-001-5-07-251	LVSO:BM:OFC SUPPLY, JAIL EXP, AM	21.99			
648	COMMERCE BANK-COMMER	COMMERCE BANK-COMMERCIAL CARDS	336178	104510 AP	08/25/2023	3-001-5-07-262	SO:MULTI:TNG, JAIL/MAINT/INMATE	5.98			
648	COMMERCE BANK-COMMER	COMMERCE BANK-COMMERCIAL CARDS	336178	104510 AP	08/25/2023	3-001-5-07-301	LVSO:BM:OFC SUPPLY, JAIL EXP, AM	329.32			
648	COMMERCE BANK-COMMER	COMMERCE BANK-COMMERCIAL CARDS	336178	104510 AP	08/25/2023	3-001-5-07-301	SO:MULTI:TNG, JAIL/MAINT/INMATE	32.87			
648	COMMERCE BANK-COMMER	COMMERCE BANK-COMMERCIAL CARDS	336178	104510 AP	08/25/2023	3-001-5-07-301	SO:MULTI:TNG, JAIL/MAINT/INMATE	85.87			
648	COMMERCE BANK-COMMER	COMMERCE BANK-COMMERCIAL CARDS	336178	104510 AP	08/25/2023	3-001-5-07-350	SO:MULTI:TNG, JAIL/MAINT/INMATE	99.96			
648	COMMERCE BANK-COMMER	COMMERCE BANK-COMMERCIAL CARDS	336178	104510 AP	08/25/2023	3-001-5-07-354	SO:ZP:COMMUNITY OUTREACH	130.14			
648	COMMERCE BANK-COMMER	COMMERCE BANK-COMMERCIAL CARDS	336178	104510 AP	08/25/2023	3-001-5-07-356	LVSO:BM:OFC SUPPLY, JAIL EXP, AM	113.90			
648	COMMERCE BANK-COMMER	COMMERCE BANK-COMMERCIAL CARDS	336178	104510 AP	08/25/2023	3-001-5-07-357	SO:MULTI:TNG, JAIL/MAINT/INMATE	35.47			
648	COMMERCE BANK-COMMER	COMMERCE BANK-COMMERCIAL CARDS	336178	104510 AP	08/25/2023	3-001-5-07-359	LVSO:BM:OFC SUPPLY, JAIL EXP, AM	353.31			
648	COMMERCE BANK-COMMER	COMMERCE BANK-COMMERCIAL CARDS	336178	104510 AP	08/25/2023	3-001-5-07-359	SO:MULTI:TNG, JAIL/MAINT/INMATE	751.29			
648	COMMERCE BANK-COMMER	COMMERCE BANK-COMMERCIAL CARDS	336178	104510 AP	08/25/2023	3-001-5-07-360	SO:MULTI:TNG, JAIL/MAINT/INMATE	553.17			
648	COMMERCE BANK-COMMER	COMMERCE BANK-COMMERCIAL CARDS	336178	104510 AP	08/25/2023	3-001-5-07-362	LVSO:BM:OFC SUPPLY, JAIL EXP, AM	64.96-			
648	COMMERCE BANK-COMMER	COMMERCE BANK-COMMERCIAL CARDS	336178	104510 AP	08/25/2023	3-001-5-09-203	BOCC/LEGAL:RM:SHIRTS, COINS, LOD	350.00			
648	COMMERCE BANK-COMMER	COMMERCE BANK-COMMERCIAL CARDS	336178	104510 AP	08/25/2023	3-001-5-11-290	CO ATTY:REF ON HOUSTON CONF HO	1,238.52-			
648	COMMERCE BANK-COMMER	COMMERCE BANK-COMMERCIAL CARDS	336178	104510 AP	08/25/2023	3-001-5-14-229	BG:WATER CONF, JC, CTHSE, HD, ANNE	350.70			
648	COMMERCE BANK-COMMER	COMMERCE BANK-COMMERCIAL CARDS	336178	104510 AP	08/25/2023	3-001-5-14-247	IRON MOUNTAIN SHREDDING CTHSE	29.96			
648	COMMERCE BANK-COMMER	COMMERCE BANK-COMMERCIAL CARDS	336178	104510 AP	08/25/2023	3-001-5-14-332	SO:MULTI:TNG, JAIL/MAINT/INMATE	25.90			
648	COMMERCE BANK-COMMER	COMMERCE BANK-COMMERCIAL CARDS	336178	104510 AP	08/25/2023	3-001-5-18-254	IS:GOTOMEETING SUB (X25)	954.99			
648	COMMERCE BANK-COMMER	COMMERCE BANK-COMMERCIAL CARDS	336178	104510 AP	08/25/2023	3-001-5-19-217	DIST CT JC:PUBLICATIONS,OFC SU	1,028.52			
648	COMMERCE BANK-COMMER	COMMERCE BANK-COMMERCIAL CARDS	336178	104510 AP	08/25/2023	3-001-5-19-220	IRON MOUNTAIN SHREDDING HSDJ42	183.35			
648	COMMERCE BANK-COMMER	COMMERCE BANK-COMMERCIAL CARDS	336178	104510 AP	08/25/2023	3-001-5-19-301	DIST CT JC:PUBLICATIONS,OFC SU	41.20			
648	COMMERCE BANK-COMMER	COMMERCE BANK-COMMERCIAL CARDS	336178	104510 AP	08/25/2023	3-001-5-21-300	HEALTH DEPT:ELC, PP, WIC, SERVICE	155.40			
648	COMMERCE BANK-COMMER	COMMERCE BANK-COMMERCIAL CARDS	336178	104510 AP	08/25/2023	3-001-5-23-202	ADMIN:TC:IED ANNUAL CONF, LODG	975.00			
648	COMMERCE BANK-COMMER	COMMERCE BANK-COMMERCIAL CARDS	336178	104510 AP	08/25/2023	3-001-5-23-209	COSTAR - JULY REALTY DATABASE	424.00			
648	COMMERCE BANK-COMMER	COMMERCE BANK-COMMERCIAL CARDS	336178	104510 AP	08/25/2023	3-001-5-23-209	COSTAR AUGUST REALTY /ANALYTIC	424.00			
648	COMMERCE BANK-COMMER	COMMERCE BANK-COMMERCIAL CARDS	336178	104510 AP	08/25/2023	3-001-5-23-213	ADMIN:TC:IED ANNUAL CONF, LODG	280.55			
648	COMMERCE BANK-COMMER	COMMERCE BANK-COMMERCIAL CARDS	336178	104510 AP	08/25/2023	3-001-5-28-223	HR: SHRM MEMBERSHIP	244.00			
648	COMMERCE BANK-COMMER	COMMERCE BANK-COMMERCIAL CARDS	336178	104510 AP	08/25/2023	3-001-5-28-301	IRON MOUNTAIN SHREDDING CTHSE	14.98			
648	COMMERCE BANK-COMMER	COMMERCE BANK-COMMERCIAL CARDS	336178	104510 AP	08/25/2023	3-001-5-31-290	BG:WATER CONF, JC, CTHSE, HD, ANNE	1,130.00			
648	COMMERCE BANK-COMMER	COMMERCE BANK-COMMERCIAL CARDS	336178	104510 AP	08/25/2023	3-001-5-31-290	BG:NH:CTHSE, CUSHING, JC MATERIA	702.24			
648	COMMERCE BANK-COMMER	COMMERCE BANK-COMMERCIAL CARDS	336178	104510 AP	08/25/2023	3-001-5-31-293	BG:WATER CONF, JC, CTHSE, HD, ANNE	298.00			
648	COMMERCE BANK-COMMER	COMMERCE BANK-COMMERCIAL CARDS	336178	104510 AP	08/25/2023	3-001-5-31-294	BG:WATER CONF, JC, CTHSE, HD, ANNE	372.75			
648	COMMERCE BANK-COMMER	COMMERCE BANK-COMMERCIAL CARDS	336178	104510 AP	08/25/2023	3-001-5-31-297	BG:WATER CONF, JC, CTHSE, HD, ANNE	68.00			
648	COMMERCE BANK-COMMER	COMMERCE BANK-COMMERCIAL CARDS	336178	104510 AP	08/25/2023	3-001-5-31-301	BG:WATER CONF, JC, CTHSE, HD, ANNE	34.99			
648	COMMERCE BANK-COMMER	COMMERCE BANK-COMMERCIAL CARDS	336178	104510 AP	08/25/2023	3-001-5-31-312	BG:WATER CONF, JC, CTHSE, HD, ANNE	971.60			
648	COMMERCE BANK-COMMER	COMMERCE BANK-COMMERCIAL CARDS	336178	104510 AP	08/25/2023	3-001-5-31-312	BG;RT:MATERIAL	82.00			
648	COMMERCE BANK-COMMER	COMMERCE BANK-COMMERCIAL CARDS	336178	104510 AP	08/25/2023	3-001-5-31-312	BG:EC:CUSHING, CTHSE MAINT/SUP	57.96			
648	COMMERCE BANK-COMMER	COMMERCE BANK-COMMERCIAL CARDS	336178	104510 AP	08/25/2023	3-001-5-31-312	BG:NH:CTHSE, CUSHING, JC MATERIA	45.03			
648	COMMERCE BANK-COMMER	COMMERCE BANK-COMMERCIAL CARDS	336178	104510 AP	08/25/2023	3-001-5-31-313	BG:NH:CTHSE, CUSHING, JC MATERIA	68.80			
648	COMMERCE BANK-COMMER	COMMERCE BANK-COMMERCIAL CARDS	336178	104510 AP	08/25/2023	3-001-5-31-320	BG:EC:CUSHING, CTHSE MAINT/SUP	218.93			
648	COMMERCE BANK-COMMER	COMMERCE BANK-COMMERCIAL CARDS	336178	104510 AP	08/25/2023	3-001-5-31-390	BG:WATER CONF, JC, CTHSE, HD, ANNE	213.68			
648	COMMERCE BANK-COMMER	COMMERCE BANK-COMMERCIAL CARDS	336178	104510 AP	08/25/2023	3-001-5-31-390	BG:EC:CUSHING, CTHSE MAINT/SUP	177.70			

START DATE: 08/19/2023 END DATE: 08/25/2023

TYPES OF CHECKS SELECTED: * ALL TYPES

			P.O.NUMBER	CHECK#						
648	COMMERCE BANK-COMMER	COMMERCE BANK-COMMERCIAL CARDS	336178	104510 AP	08/25/2023	3-001-5-31-391	BG:WATER CONF,JC,CTHSE,HD,ANNE		183.45	
648	COMMERCE BANK-COMMER	COMMERCE BANK-COMMERCIAL CARDS	336178	104510 AP	08/25/2023	3-001-5-32-296	BG:WATER CONF,JC,CTHSE,HD,ANNE		926.91	
648	COMMERCE BANK-COMMER	COMMERCE BANK-COMMERCIAL CARDS	336178	104510 AP	08/25/2023	3-001-5-32-297	BG:WATER CONF,JC,CTHSE,HD,ANNE		474.80	
648	COMMERCE BANK-COMMER	COMMERCE BANK-COMMERCIAL CARDS	336178	104510 AP	08/25/2023	3-001-5-32-391	BG:WATER CONF,JC,CTHSE,HD,ANNE		671.24	
648	COMMERCE BANK-COMMER	COMMERCE BANK-COMMERCIAL CARDS	336178	104510 AP	08/25/2023	3-001-5-32-391	BG:NH:CTHSE,CUSHING,JC MATERIA		603.68	
648	COMMERCE BANK-COMMER	COMMERCE BANK-COMMERCIAL CARDS	336178	104510 AP	08/25/2023	3-001-5-33-209	BG:WATER CONF,JC,CTHSE,HD,ANNE		43.23	
648	COMMERCE BANK-COMMER	COMMERCE BANK-COMMERCIAL CARDS	336178	104510 AP	08/25/2023	3-001-5-33-296	BG:WATER CONF,JC,CTHSE,HD,ANNE		208.80	
648	COMMERCE BANK-COMMER	COMMERCE BANK-COMMERCIAL CARDS	336178	104510 AP	08/25/2023	3-001-5-33-297	BG:WATER CONF,JC,CTHSE,HD,ANNE		235.00	
648	COMMERCE BANK-COMMER	COMMERCE BANK-COMMERCIAL CARDS	336178	104510 AP	08/25/2023	3-001-5-33-391	BG:WATER CONF,JC,CTHSE,HD,ANNE		595.77	
648	COMMERCE BANK-COMMER	COMMERCE BANK-COMMERCIAL CARDS	336178	104510 AP	08/25/2023	3-001-5-33-391	BG:EC:CUSHING, CTHSE MAINT/SUP		99.00	
648	COMMERCE BANK-COMMER	COMMERCE BANK-COMMERCIAL CARDS	336178	104510 AP	08/25/2023	3-001-5-33-391	BG:NH:CTHSE,CUSHING,JC MATERIA		351.39	
648	COMMERCE BANK-COMMER	COMMERCE BANK-COMMERCIAL CARDS	336178	104510 AP	08/25/2023	3-001-5-41-201	APPRAISER:WM:COMPUTER/OFC SUPP		69.29	
648	COMMERCE BANK-COMMER	COMMERCE BANK-COMMERCIAL CARDS	336178	104510 AP	08/25/2023	3-001-5-41-301	APPRAISER:WM:COMPUTER/OFC SUPP		79.14	
648	COMMERCE BANK-COMMER	COMMERCE BANK-COMMERCIAL CARDS	336178	104510 AP	08/25/2023	3-001-5-41-371	APPRAISER:WM:COMPUTER/OFC SUPP		804.87	
648	COMMERCE BANK-COMMER	COMMERCE BANK-COMMERCIAL CARDS	336178	104510 AP	08/25/2023	3-001-5-42-285	GIS:ESRI CREDITS, KAM CONF,PYT		470.00	
648	COMMERCE BANK-COMMER	COMMERCE BANK-COMMERCIAL CARDS	336178	104510 AP	08/25/2023	3-001-5-42-293	GIS:ESRI CREDITS, KAM CONF,PYT		480.00	
648	COMMERCE BANK-COMMER	COMMERCE BANK-COMMERCIAL CARDS	336178	104510 AP	08/25/2023	3-001-5-49-202	ELECTION:JK:TRAINING LUNCH		85.40	
648	COMMERCE BANK-COMMER	COMMERCE BANK-COMMERCIAL CARDS	336178	104510 AP	08/25/2023	3-001-5-49-301	4IMPRINT - SOUVENIR STICKY NOT		601.41	
648	COMMERCE BANK-COMMER	COMMERCE BANK-COMMERCIAL CARDS	336178	104510 AP	08/25/2023	3-001-5-49-301	AMAZON-LABELS FOR RNR, ELECTIO		59.08	
648	COMMERCE BANK-COMMER	COMMERCE BANK-COMMERCIAL CARDS	336178	104510 AP	08/25/2023	3-001-5-53-308	NOX WEED:KH,AP,EQUIPMENT PARTS		486.98	
648	COMMERCE BANK-COMMER	COMMERCE BANK-COMMERCIAL CARDS	336178	104510 AP	08/25/2023	3-001-5-53-308	NOX WEED:KH,AP,EQUIPMENT PARTS		778.14	
648	COMMERCE BANK-COMMER	COMMERCE BANK-COMMERCIAL CARDS	336178	104510 AP	08/25/2023	3-001-5-82-301	PLANNING:SS:SAFETY,CODE ENF		50.00	
							*** VENDOR	648 TOTAL		40,209.83
86	EVERGY	EVERGY KANSAS CENTRAL INC	336180	104512 AP	08/25/2023	3-001-5-05-215	ELECTRIC SVC EMS ADMIN,WIC,HEA		803.97	
86	EVERGY	EVERGY KANSAS CENTRAL INC	336180	104512 AP	08/25/2023	3-001-5-14-220	ELEC SVC COURTHOUSE		11,756.45	
86	EVERGY	EVERGY KANSAS CENTRAL INC	336180	104512 AP	08/25/2023	3-001-5-32-392	ELEC SVC JUSTICE CENTER		27,770.76	
86	EVERGY	EVERGY KANSAS CENTRAL INC	336136	104479 AP	08/23/2023	3-001-5-53-219	ELEC SVC NOX WEED		357.63	
							*** VENDOR	86 TOTAL		40,688.81
8726	FAGAN COMPANY	FAGAN COMPANY	336181	104513 AP	08/25/2023	3-001-5-32-209	24520 JUSTICE CENTER CHILLER S		1,051.60	
8726	FAGAN COMPANY	FAGAN COMPANY	336181	104513 AP	08/25/2023	3-001-5-33-209	24520 CUSHING - SVC CALL - AHU		875.22	
							*** VENDOR	8726 TOTAL		1,926.82
5824	FRONTIER	FORENSIC MEDICAL HOLDINGS OF K	336183	104515 AP	08/25/2023	3-001-5-13-271	INV 22651JULY AUTOPSIES ETC		25.00	
5824	FRONTIER	FORENSIC MEDICAL HOLDINGS OF K	336183	104515 AP	08/25/2023	3-001-5-13-271	INV 22651JULY AUTOPSIES ETC		2,275.00	
5824	FRONTIER	FORENSIC MEDICAL HOLDINGS OF K	336183	104515 AP	08/25/2023	3-001-5-13-271	INV 22651JULY AUTOPSIES ETC		2,275.00	
5824	FRONTIER	FORENSIC MEDICAL HOLDINGS OF K	336183	104515 AP	08/25/2023	3-001-5-13-271	INV 22651JULY AUTOPSIES ETC		50.00	
5824	FRONTIER	FORENSIC MEDICAL HOLDINGS OF K	336183	104515 AP	08/25/2023	3-001-5-13-271	INV 22651JULY AUTOPSIES ETC		2,275.00	
5824	FRONTIER	FORENSIC MEDICAL HOLDINGS OF K	336183	104515 AP	08/25/2023	3-001-5-13-271	INV 22651JULY AUTOPSIES ETC		25.00	
5824	FRONTIER	FORENSIC MEDICAL HOLDINGS OF K	336183	104515 AP	08/25/2023	3-001-5-13-271	INV 22651JULY AUTOPSIES ETC		2,275.00	
5824	FRONTIER	FORENSIC MEDICAL HOLDINGS OF K	336183	104515 AP	08/25/2023	3-001-5-13-271	INV 22651JULY AUTOPSIES ETC		700.00	
5824	FRONTIER	FORENSIC MEDICAL HOLDINGS OF K	336183	104515 AP	08/25/2023	3-001-5-13-271	INV 22651JULY AUTOPSIES ETC		2,275.00	
5824	FRONTIER	FORENSIC MEDICAL HOLDINGS OF K	336183	104515 AP	08/25/2023	3-001-5-13-271	INV 22651JULY AUTOPSIES ETC		2,275.00	
5824	FRONTIER	FORENSIC MEDICAL HOLDINGS OF K	336183	104515 AP	08/25/2023	3-001-5-13-271	INV 22651JULY AUTOPSIES ETC		700.00	
5824	FRONTIER	FORENSIC MEDICAL HOLDINGS OF K	336183	104515 AP	08/25/2023	3-001-5-13-271	INV 22651JULY AUTOPSIES ETC		2,275.00	
5824	FRONTIER	FORENSIC MEDICAL HOLDINGS OF K	336183	104515 AP	08/25/2023	3-001-5-13-271	INV 22651JULY AUTOPSIES ETC		50.00	
5824	FRONTIER	FORENSIC MEDICAL HOLDINGS OF K	336183	104515 AP	08/25/2023	3-001-5-13-271	INV 22651JULY AUTOPSIES ETC		2,275.00	
5824	FRONTIER	FORENSIC MEDICAL HOLDINGS OF K	336183	104515 AP	08/25/2023	3-001-5-13-271	INV 22651JULY AUTOPSIES ETC		25.00	
5824	FRONTIER	FORENSIC MEDICAL HOLDINGS OF K	336183	104515 AP	08/25/2023	3-001-5-13-271	INV 22651JULY AUTOPSIES ETC		50.00	
5824	FRONTIER	FORENSIC MEDICAL HOLDINGS OF K	336183	104515 AP	08/25/2023	3-001-5-13-271	INV 22651JULY AUTOPSIES ETC		700.00	
5824	FRONTIER	FORENSIC MEDICAL HOLDINGS OF K	336183	104515 AP	08/25/2023	3-001-5-13-271	INV 22651JULY AUTOPSIES ETC		2,275.00	
5824	FRONTIER	FORENSIC MEDICAL HOLDINGS OF K	336183	104515 AP	08/25/2023	3-001-5-13-271	INV 22651JULY AUTOPSIES ETC		25.00	
5824	FRONTIER	FORENSIC MEDICAL HOLDINGS OF K	336183	104515 AP	08/25/2023	3-001-5-13-271	INV 22651JULY AUTOPSIES ETC		30.00	
5824	FRONTIER	FORENSIC MEDICAL HOLDINGS OF K	336183	104515 AP	08/25/2023	3-001-5-13-271	INV 22651JULY AUTOPSIES ETC		15.00	

TYPES OF CHECKS SELECTED: * ALL TYPES

			P.O.NUMBER	CHECK#					
5824	FRONTIER	FORENSIC MEDICAL HOLDINGS OF K	336183	104515 AP	08/25/2023	3-001-5-13-271	INV 22682 SUPPLEMENTAL TOXICOL	26.00	
5824	FRONTIER	FORENSIC MEDICAL HOLDINGS OF K	336183	104515 AP	08/25/2023	3-001-5-13-271	INV 22682 SUPPLEMENTAL TOXICOL	26.00	
*** VENDOR 5824 TOTAL								22,922.00	
727	HERRERA STUCCO	HERRERA STUCCO LLC	336187	104519 AP	08/25/2023	3-001-5-31-298	STUCCO REPAIRS MATERIALS/LABOR	875.00	
236	INTERPRETERS	INTERPRETERS INC	336188	104520 AP	08/25/2023	3-001-5-19-221	DIST CT INTERPRETER (8/2 & 8/9	306.33	
565	KA-COMM INC	KA-COMM INC	336190	104522 AP	08/25/2023	3-001-5-07-213	SHERIFF-VEH MAINT	158.92	
6021	KADCCA	KADCCA	336191	104523 AP	08/25/2023	3-001-5-19-213	OCT CONF	200.00	
6021	KADCCA	KADCCA	336191	104523 AP	08/25/2023	3-001-5-19-213	OCT CONF	200.00	
*** VENDOR 6021 TOTAL								400.00	
1842	KONE INC	KONE INC	336194	104526 AP	08/25/2023	3-001-5-31-220	N40131062 ELEVATOR MAINT JULY	129.86	
1842	KONE INC	KONE INC	336194	104526 AP	08/25/2023	3-001-5-32-262	N40131062 ELEVATOR MAINT JULY	519.46	
1842	KONE INC	KONE INC	336194	104526 AP	08/25/2023	3-001-5-33-262	N40131062 ELEVATOR MAINT JULY	1,179.86	
*** VENDOR 1842 TOTAL								1,829.18	
168	LCHS	LEAVENWORTH CO HUMANE SOCIETY	336196	104528 AP	08/25/2023	3-001-5-07-266	JULY 2023 SERVICES PER CONTRAC	1,378.12	
4755	LEAV PAPER	LEAVENWORTH PAPER AND OFFICE S	336197	104529 AP	08/25/2023	3-001-5-19-301	DIST CT CLERK PRINT CARTRIDGES	1,240.10	
4755	LEAV PAPER	LEAVENWORTH PAPER AND OFFICE S	336197	104529 AP	08/25/2023	3-001-5-19-301	DIST CT CSO-CREDITING TONER CA	333.75-	
*** VENDOR 4755 TOTAL								906.35	
537	LEAV TIMES	CHERRYROAD MEDIA INC	336198	104530 AP	08/25/2023	3-001-5-06-218	21250 PUBLIC NOTICES, RESOLUTI	12.78	
537	LEAV TIMES	CHERRYROAD MEDIA INC	336198	104530 AP	08/25/2023	3-001-5-06-218	21250 PUBLIC NOTICES, RESOLUTI	27.56	
537	LEAV TIMES	CHERRYROAD MEDIA INC	336198	104530 AP	08/25/2023	3-001-5-06-218	21250 PUBLIC NOTICES, RESOLUTI	11.38	
537	LEAV TIMES	CHERRYROAD MEDIA INC	336198	104530 AP	08/25/2023	3-001-5-06-218	21250 PUBLIC NOTICES, RESOLUTI	11.58	
537	LEAV TIMES	CHERRYROAD MEDIA INC	336198	104530 AP	08/25/2023	3-001-5-06-218	21250 PUBLIC NOTICES, RESOLUTI	19.97	
537	LEAV TIMES	CHERRYROAD MEDIA INC	336198	104530 AP	08/25/2023	3-001-5-19-217	24156 DIST CT LEGAL NOTICE 22J	43.54	
537	LEAV TIMES	CHERRYROAD MEDIA INC	336198	104530 AP	08/25/2023	3-001-5-49-341	21272 NOTICE OF ELECTION 453,4	30.94	
537	LEAV TIMES	CHERRYROAD MEDIA INC	336198	104530 AP	08/25/2023	3-001-5-49-341	21272 NOTICE OF ELECTION 453,4	19.28	
537	LEAV TIMES	CHERRYROAD MEDIA INC	336198	104530 AP	08/25/2023	3-001-5-49-341	21272 NOTICE OF ELECTION 453,4	16.78	
537	LEAV TIMES	CHERRYROAD MEDIA INC	336198	104530 AP	08/25/2023	3-001-5-49-341	21272 NOTICE OF ELECTION 453,4	11.38	
*** VENDOR 537 TOTAL								205.19	
688	LOGICALIS INC	LOGICALIS	336200	104532 AP	08/25/2023	3-001-5-18-220	COLEAV01 PROFESSIONAL SVC	220.00	
5749	LOZENSKI MECHANICAL	LOZENSKI MECHANICAL INSULATION	336201	104533 AP	08/25/2023	3-001-5-33-209	COA ABATE MOLDY/WET INSULATION	3,528.00	
5749	LOZENSKI MECHANICAL	LOZENSKI MECHANICAL INSULATION	336201	104533 AP	08/25/2023	3-001-5-33-209	COA ABATE MOLDY/WET INSULATION	1,590.00	
*** VENDOR 5749 TOTAL								5,118.00	
61	MIAMI CO DIST CT	DISTRICT COURT OF MIAMI COUNTY	336202	104534 AP	08/25/2023	3-001-5-19-222	REVIEW FEE MI2022CT036 (DK)	60.00	
2059	MIDWEST OFFICE TECH	MIDWEST OFFICE TECHNOLOGY INC	336203	104535 AP	08/25/2023	3-001-5-04-201	OPL304_K REG OF DEEDS COPIES	88.14	
7098	QUILL CORP	QUILL CORP	336205	104537 AP	08/25/2023	3-001-5-01-301	9686154 BOCC OFFICE SUPPLIES	143.43	
7098	QUILL CORP	QUILL CORP	336141	104484 AP	08/23/2023	3-001-5-07-301	C8333027 OFFICE SUPPLIES SHERI	191.82	
7098	QUILL CORP	QUILL CORP	336205	104537 AP	08/25/2023	3-001-5-28-301	5367908 HUMAN RESOURCES OFFICE	80.15	
7098	QUILL CORP	QUILL CORP	336205	104537 AP	08/25/2023	3-001-5-28-301	5367908 HUMAN RESOURCES OFFICE	38.36	
*** VENDOR 7098 TOTAL								453.76	
458	ROAD & BRIDGE	LEAV CO PUBLIC WORKS	336207	104539 AP	08/25/2023	3-001-5-07-213	SHERIFF/EOC FUEL, VEH MAINT	8,039.09	
458	ROAD & BRIDGE	LEAV CO PUBLIC WORKS	336207	104539 AP	08/25/2023	3-001-5-07-213	SHERIFF/EOC FUEL, VEH MAINT	38.00	
458	ROAD & BRIDGE	LEAV CO PUBLIC WORKS	336207	104539 AP	08/25/2023	3-001-5-14-332	SHERIFF/EOC FUEL, VEH MAINT	6,539.64	
458	ROAD & BRIDGE	LEAV CO PUBLIC WORKS	336207	104539 AP	08/25/2023	3-001-5-14-332	SHERIFF/EOC FUEL, VEH MAINT	676.73	
458	ROAD & BRIDGE	LEAV CO PUBLIC WORKS	336207	104539 AP	08/25/2023	3-001-5-14-336	NOX WEED	160.94	
458	ROAD & BRIDGE	LEAV CO PUBLIC WORKS	336207	104539 AP	08/25/2023	3-001-5-53-308	NOX WEED	454.49	
*** VENDOR 458 TOTAL								15,908.89	
22331	ROTH JOSEP	JOSEPH ROTH	336208	104540 AP	08/25/2023	3-001-5-41-270	2024 COMMERCIAL APPRAISALS	4,160.00	
1717	SEIFERT'S FLOORING	SEIFERT'S FLOORING	336209	104541 AP	08/25/2023	3-001-5-07-360	FLOORING FOR MEN'S BATHROOM (L	1,122.20	
22972	TRANSFER STATION	TRANSFER STATION	336212	104544 AP	08/25/2023	3-001-5-31-290	ACCT 158 BRUSH, STANDARD/CONS	47.00	
22972	TRANSFER STATION	TRANSFER STATION	336212	104544 AP	08/25/2023	3-001-5-31-290	ACCT 158 BRUSH, STANDARD/CONS	20.00	
22972	TRANSFER STATION	TRANSFER STATION	336212	104544 AP	08/25/2023	3-001-5-31-290	ACCT 158 BRUSH, STANDARD/CONS	41.00	
22972	TRANSFER STATION	TRANSFER STATION	336212	104544 AP	08/25/2023	3-001-5-32-297	ACCT 158 BRUSH, STANDARD/CONS	36.00	

START DATE: 08/19/2023 END DATE: 08/25/2023

TYPES OF CHECKS SELECTED: * ALL TYPES

		P.O.NUMBER	CHECK#							
								*** VENDOR	22972 TOTAL	144.00
2	WATER DEPT	WATER DEPT	336143	104486 AP	08/23/2023	3-001-5-32-392	WATER SVC 514 S 2ND ST	15.62		
2007	WIRENUTS	WIRENUTS	336214	104547 AP	08/25/2023	3-001-5-07-301	PAXTON KEYRING TOKENS (LVSO)	118.00		
100	WITNESS LIST									
								*** VENDOR	100 TOTAL	559.06
								TOTAL FUND 001		147,908.07

4938	BUILDING & GROUNDS	BUILDING & GROUNDS	336173	104500 AP	08/25/2023	3-108-5-00-219	HEALTH DEPT/WIC UTIL/JAN/PEST	1,944.69		
4938	BUILDING & GROUNDS	BUILDING & GROUNDS	336173	104500 AP	08/25/2023	3-108-5-00-606	HEALTH DEPT/WIC UTIL/JAN/PEST	648.23		
								*** VENDOR	4938 TOTAL	2,592.92
648	COMMERCE BANK-COMMER	COMMERCE BANK-COMMERCIAL CARDS	336178	104510 AP	08/25/2023	3-108-5-00-213	HEALTH DEPT:ELC,PP,WIC,SERVICE	64.00		
648	COMMERCE BANK-COMMER	COMMERCE BANK-COMMERCIAL CARDS	336178	104510 AP	08/25/2023	3-108-5-00-219	AT&T MOBILITY HEALTH DEPT 2848	164.92		
648	COMMERCE BANK-COMMER	COMMERCE BANK-COMMERCIAL CARDS	336178	104510 AP	08/25/2023	3-108-5-00-219	HEALTH DEPT:ELC,PP,WIC,SERVICE	266.38		
648	COMMERCE BANK-COMMER	COMMERCE BANK-COMMERCIAL CARDS	336178	104510 AP	08/25/2023	3-108-5-00-280	HEALTH DEPT:ELC,PP,WIC,SERVICE	1,408.53		
648	COMMERCE BANK-COMMER	COMMERCE BANK-COMMERCIAL CARDS	336178	104510 AP	08/25/2023	3-108-5-00-301	HEALTH DEPT:ELC,PP,WIC,SERVICE	335.81		
648	COMMERCE BANK-COMMER	COMMERCE BANK-COMMERCIAL CARDS	336178	104510 AP	08/25/2023	3-108-5-00-380	HEALTH DEPT:ELC,PP,WIC,SERVICE	705.56		
648	COMMERCE BANK-COMMER	COMMERCE BANK-COMMERCIAL CARDS	336178	104510 AP	08/25/2023	3-108-5-00-384	HEALTH DEPT:ELC,PP,WIC,SERVICE	5,536.18		
648	COMMERCE BANK-COMMER	COMMERCE BANK-COMMERCIAL CARDS	336178	104510 AP	08/25/2023	3-108-5-00-601	HEALTH DEPT:ELC,PP,WIC,SERVICE	139.40		
648	COMMERCE BANK-COMMER	COMMERCE BANK-COMMERCIAL CARDS	336178	104510 AP	08/25/2023	3-108-5-00-606	HEALTH DEPT:ELC,PP,WIC,SERVICE	1,556.25		
648	COMMERCE BANK-COMMER	COMMERCE BANK-COMMERCIAL CARDS	336178	104510 AP	08/25/2023	3-108-5-00-606	HEALTH:JH:WIC	550.00		
								*** VENDOR	648 TOTAL	10,727.03
86	EVERGY	EVERGY KANSAS CENTRAL INC	336180	104512 AP	08/25/2023	3-108-5-00-219	ELECTRIC SVC EMS ADMIN,WIC,HEA	602.98		
86	EVERGY	EVERGY KANSAS CENTRAL INC	336180	104512 AP	08/25/2023	3-108-5-00-606	ELECTRIC SVC EMS ADMIN,WIC,HEA	200.99		
								*** VENDOR	86 TOTAL	803.97
12204	PROPIO LANGUAGE	PROPIO LANGUAGE SERVICES LLC	336204	104536 AP	08/25/2023	3-108-5-00-606	WIC INTERPRETING SERVICE	25.00		
1474	SPANISH SERVICES	SPANISH SERVICES	336211	104543 AP	08/25/2023	3-108-5-00-280	INTERPRETER HEALTH DEPT JAN-JU	962.50		
								TOTAL FUND 108		15,111.42

24079	HEALTH GAUGE	STROKE DETECTION PLUS	336186	104518 AP	08/25/2023	3-112-5-00-210	DEPOSIT FOR 2023 SCREENINGS	2,500.00		
								TOTAL FUND 112		2,500.00

385	CNH INDUSTRIAL	CNH INDUSTRIAL CAPITAL AMERICA	336135	104478 AP	08/23/2023	3-115-5-00-423	2280781 NOX WEED 03-03 PMT 2 O	15,786.80		
2059	MIDWEST OFFICE TECH	MIDWEST OFFICE TECHNOLOGY INC	336139	104482 AP	08/23/2023	3-115-5-00-409	OPK599_K COPIER (ROD)	7,368.00		
								TOTAL FUND 115		23,154.80

843	FIDLAR	FIDLAR	336182	104514 AP	08/25/2023	3-119-5-00-252	2010343 BASTION AVID HOSING OC	3,500.00		
2059	MIDWEST OFFICE TECH	MIDWEST OFFICE TECHNOLOGY INC	336203	104535 AP	08/25/2023	3-119-5-00-252	OPL304_K REG OF DEEDS COPIES	88.13		
								TOTAL FUND 119		3,588.13

warrants by vendor

TYPES OF CHECKS SELECTED: * ALL TYPES

			P.O.NUMBER	CHECK#						
648	COMMERCE BANK-COMMER	COMMERCE BANK-COMMERCIAL CARDS	336178	104510 AP	08/25/2023	3-123-5-00-301	COMM CORR KH:JUV/ADT/JCP		39.61	
							TOTAL FUND 123			39.61
648	COMMERCE BANK-COMMER	COMMERCE BANK-COMMERCIAL CARDS	336178	104510 AP	08/25/2023	3-126-5-00-222	COMM CORR JV:LODGING REFUND,PP		142.74-	
648	COMMERCE BANK-COMMER	COMMERCE BANK-COMMERCIAL CARDS	336178	104510 AP	08/25/2023	3-126-5-00-222	COMM CORR JV:LODGING REFUND,PP		713.70-	
648	COMMERCE BANK-COMMER	COMMERCE BANK-COMMERCIAL CARDS	336178	104510 AP	08/25/2023	3-126-5-00-225	IRON MOUNTAIN SHREDDING HSDJ42		17.28	
648	COMMERCE BANK-COMMER	COMMERCE BANK-COMMERCIAL CARDS	336178	104510 AP	08/25/2023	3-126-5-00-226	COMM CORR ADT SH: CLIENT SVC,P		50.00	
							*** VENDOR	648 TOTAL		789.16
2505	INTRINSIC INTERVENTI	INTRINSIC INTERVENTIONS	336189	104521 AP	08/25/2023	3-126-5-00-226	SMART SCREEN UA TEST CUPS		1,273.00	
7098	QUILL CORP	QUILL CORP	336205	104537 AP	08/25/2023	3-126-5-00-321	5645204 OFFICE SUPPLIES		31.98	
7098	QUILL CORP	QUILL CORP	336205	104537 AP	08/25/2023	3-126-5-00-321	5645204 OFFICE SUPPLIES		27.49	
							*** VENDOR	7098 TOTAL		59.47
							TOTAL FUND 126			543.31
20588	ADVANTAGE	ADVANTAGE PRINTING	336168	104495 AP	08/25/2023	3-127-5-00-3	COMM CORR - BUSINESS CARDS RED		62.50	
648	COMMERCE BANK-COMMER	COMMERCE BANK-COMMERCIAL CARDS	336178	104510 AP	08/25/2023	3-127-5-00-3	COMM CORR KH:JUV/ADT/JCP		252.46	
648	COMMERCE BANK-COMMER	COMMERCE BANK-COMMERCIAL CARDS	336178	104510 AP	08/25/2023	3-127-5-00-3	COMM CORR ADT SH: CLIENT SVC,P		327.51	
648	COMMERCE BANK-COMMER	COMMERCE BANK-COMMERCIAL CARDS	336178	104510 AP	08/25/2023	3-127-5-00-3	COMM CORR JV:LODGING REFUND,PP		752.41	
648	COMMERCE BANK-COMMER	COMMERCE BANK-COMMERCIAL CARDS	336178	104510 AP	08/25/2023	3-127-5-00-3	COMM CORR NONGRANT:RB:PPPS WEE		670.31	
							*** VENDOR	648 TOTAL		2,002.69
537	LEAV TIMES	CHERRYROAD MEDIA INC	336198	104530 AP	08/25/2023	3-127-5-00-2	COMMUNITY CORRECTIONS 1 YEAR S		179.00	
							TOTAL FUND 127			2,244.19
7158	A-1 RENTAL	A-1 RENTAL	336131	104474 AP	08/23/2023	3-133-5-00-214	8-13 MONHTLY TOILET RENTALS		220.00	
7158	A-1 RENTAL	A-1 RENTAL	336131	104474 AP	08/23/2023	3-133-5-00-214	8-13 MONHTLY TOILET RENTALS		110.00	
							*** VENDOR	7158 TOTAL		330.00
648	COMMERCE BANK-COMMER	COMMERCE BANK-COMMERCIAL CARDS	336178	104510 AP	08/25/2023	3-133-5-00-210	8-5 AT&T MOBILITY PW/COLE		466.26	
648	COMMERCE BANK-COMMER	COMMERCE BANK-COMMERCIAL CARDS	336178	104510 AP	08/25/2023	3-133-5-00-214	8-37 JW,JP,PW:FENCING,OFC SUPP		285.96	
648	COMMERCE BANK-COMMER	COMMERCE BANK-COMMERCIAL CARDS	336178	104510 AP	08/25/2023	3-133-5-00-301	8-36 VG/AA,EQUIP,PARTS,SIGN,OF		253.27	
648	COMMERCE BANK-COMMER	COMMERCE BANK-COMMERCIAL CARDS	336178	104510 AP	08/25/2023	3-133-5-00-301	8-37 JW,JP,PW:FENCING,OFC SUPP		367.92	
648	COMMERCE BANK-COMMER	COMMERCE BANK-COMMERCIAL CARDS	336178	104510 AP	08/25/2023	3-133-5-00-310	8-36 VG/AA,EQUIP,PARTS,SIGN,OF		74.50	
648	COMMERCE BANK-COMMER	COMMERCE BANK-COMMERCIAL CARDS	336178	104510 AP	08/25/2023	3-133-5-00-311	8-36 VG/AA,EQUIP,PARTS,SIGN,OF		217.93	
648	COMMERCE BANK-COMMER	COMMERCE BANK-COMMERCIAL CARDS	336178	104510 AP	08/25/2023	3-133-5-00-312	8-36 VG/AA,EQUIP,PARTS,SIGN,OF		1,212.22	
648	COMMERCE BANK-COMMER	COMMERCE BANK-COMMERCIAL CARDS	336178	104510 AP	08/25/2023	3-133-5-00-315	8-37 JW,JP,PW:FENCING,OFC SUPP		546.86	
648	COMMERCE BANK-COMMER	COMMERCE BANK-COMMERCIAL CARDS	336178	104510 AP	08/25/2023	3-133-5-00-326	8-36 VG/AA,EQUIP,PARTS,SIGN,OF		224.25	
648	COMMERCE BANK-COMMER	COMMERCE BANK-COMMERCIAL CARDS	336178	104510 AP	08/25/2023	3-133-5-00-360	8-36 VG/AA,EQUIP,PARTS,SIGN,OF		3,789.26	
648	COMMERCE BANK-COMMER	COMMERCE BANK-COMMERCIAL CARDS	336178	104510 AP	08/25/2023	3-133-5-00-360	8-36 VG/AA,EQUIP,PARTS,SIGN,OF		2,043.95	
648	COMMERCE BANK-COMMER	COMMERCE BANK-COMMERCIAL CARDS	336178	104510 AP	08/25/2023	3-133-5-00-360	8-37 JW,JP,PW:FENCING,OFC SUPP		318.11	
648	COMMERCE BANK-COMMER	COMMERCE BANK-COMMERCIAL CARDS	336178	104510 AP	08/25/2023	3-133-5-00-363	8-36 VG/AA,EQUIP,PARTS,SIGN,OF		599.00	
648	COMMERCE BANK-COMMER	COMMERCE BANK-COMMERCIAL CARDS	336178	104510 AP	08/25/2023	3-133-5-00-364	8-36 VG/AA,EQUIP,PARTS,SIGN,OF		169.90	
648	COMMERCE BANK-COMMER	COMMERCE BANK-COMMERCIAL CARDS	336178	104510 AP	08/25/2023	3-133-5-00-365	8-36 VG/AA,EQUIP,PARTS,SIGN,OF		30.99	
648	COMMERCE BANK-COMMER	COMMERCE BANK-COMMERCIAL CARDS	336178	104510 AP	08/25/2023	3-133-5-00-440	8-37 JW,JP,PW:FENCING,OFC SUPP		303.98	
							*** VENDOR	648 TOTAL		10,904.36
86	EVERGY	EVERGY KANSAS CENTRAL INC	336136	104479 AP	08/23/2023	3-133-5-00-251	8-11 ELEC SVC - CO SHOP ET AL		911.32	
86	EVERGY	EVERGY KANSAS CENTRAL INC	336136	104479 AP	08/23/2023	3-133-5-00-251	8-11 ELEC SVC - CO SHOP ET AL		145.55	
86	EVERGY	EVERGY KANSAS CENTRAL INC	336136	104479 AP	08/23/2023	3-133-5-00-251	8-11 ELEC SVC - CO SHOP ET AL		31.64	
86	EVERGY	EVERGY KANSAS CENTRAL INC	336136	104479 AP	08/23/2023	3-133-5-00-251	8-11 ELEC SVC - CO SHOP ET AL		101.00	
							*** VENDOR	86 TOTAL		1,189.51
434	HAMM QUARR	HAMM QUARRIES	336137	104480 AP	08/23/2023	3-133-5-00-361	8-17 300467 ROCK		884.93	
434	HAMM QUARR	HAMM QUARRIES	336137	104480 AP	08/23/2023	3-133-5-00-361	8-17 300467 ROCK		205.29	
434	HAMM QUARR	HAMM QUARRIES	336137	104480 AP	08/23/2023	3-133-5-00-361	8-17 300467 ROCK		213.73	
434	HAMM QUARR	HAMM QUARRIES	336137	104480 AP	08/23/2023	3-133-5-00-361	8-17 300467 ROCK		940.95	

TYPES OF CHECKS SELECTED: * ALL TYPES

		P.O.NUMBER	CHECK#							
				*** VENDOR				434 TOTAL		2,244.90
1780	LEXECO	LEXECO	336199	104531 AP	08/25/2023	3-133-5-00-361	8-36 PUBLIC WORKS - ROCK	676.10		
1123	POMPMIDWEST	POMP'S TIRE SERVICE INC	336140	104483 AP	08/23/2023	3-133-5-00-309	8-26 1960724 TIRES	488.38		
1123	POMPMIDWEST	POMP'S TIRE SERVICE INC	336140	104483 AP	08/23/2023	3-133-5-00-309	8-26 1960724 TIRES	74.00		
1123	POMPMIDWEST	POMP'S TIRE SERVICE INC	336140	104483 AP	08/23/2023	3-133-5-00-309	8-26 1960724 TIRES	2,441.90		
1123	POMPMIDWEST	POMP'S TIRE SERVICE INC	336140	104483 AP	08/23/2023	3-133-5-00-309	8-26 1960724 TIRES	2,106.24		
				*** VENDOR				1123 TOTAL		5,110.52
632	RWD 8	RURAL WATER DIST NO 8	336142	104485 AP	08/23/2023	3-133-5-00-214	8-35 WATER METERS AT CO SHOP	125.10		
632	RWD 8	RURAL WATER DIST NO 8	336142	104485 AP	08/23/2023	3-133-5-00-214	8-35 WATER METERS AT CO SHOP	478.09		
				*** VENDOR				632 TOTAL		603.19
22972	TRANSFER STATION	TRANSFER STATION	336212	104544 AP	08/25/2023	3-133-5-00-214	8-30 ACCT 656 CONSTRUCTION WAS	116.00		
1241	VANCE BROS	VANCE BROS INC	336213	104546 AP	08/25/2023	3-133-5-00-303	8-39 ACCT 437 ROAD SEAL	8,103.90		
1241	VANCE BROS	VANCE BROS INC	336213	104546 AP	08/25/2023	3-133-5-00-303	8-39 ACCT 437 ROAD SEAL	14,641.50		
1241	VANCE BROS	VANCE BROS INC	336213	104546 AP	08/25/2023	3-133-5-00-303	8-39 ACCT 437 ROAD SEAL	14,904.66		
1241	VANCE BROS	VANCE BROS INC	336213	104546 AP	08/25/2023	3-133-5-00-303	8-39 ACCT 437 ROAD SEAL	14,775.66		
1241	VANCE BROS	VANCE BROS INC	336213	104546 AP	08/25/2023	3-133-5-00-303	8-39 ACCT 437 ROAD SEAL	14,504.76		
1241	VANCE BROS	VANCE BROS INC	336213	104546 AP	08/25/2023	3-133-5-00-303	8-39 ACCT 437 ROAD SEAL	14,798.88		
1241	VANCE BROS	VANCE BROS INC	336213	104546 AP	08/25/2023	3-133-5-00-303	8-39 ACCT 437 ROAD SEAL	15,074.94		
1241	VANCE BROS	VANCE BROS INC	336213	104546 AP	08/25/2023	3-133-5-00-303	8-39 ACCT 437 ROAD SEAL	14,472.12		
1241	VANCE BROS	VANCE BROS INC	336213	104546 AP	08/25/2023	3-133-5-00-303	8-39 ACCT 437 ROAD SEAL	14,677.62		
1241	VANCE BROS	VANCE BROS INC	336213	104546 AP	08/25/2023	3-133-5-00-303	8-40 ACCT 437 ROAD SEAL	15,051.72		
1241	VANCE BROS	VANCE BROS INC	336213	104546 AP	08/25/2023	3-133-5-00-303	8-40 ACCT 437 ROAD SEAL	14,375.20		
1241	VANCE BROS	VANCE BROS INC	336213	104546 AP	08/25/2023	3-133-5-00-303	8-40 ACCT 437 ROAD SEAL	15,020.76		
1241	VANCE BROS	VANCE BROS INC	336213	104546 AP	08/25/2023	3-133-5-00-303	8-40 ACCT 437 ROAD SEAL	15,056.88		
1241	VANCE BROS	VANCE BROS INC	336213	104546 AP	08/25/2023	3-133-5-00-303	8-40 ACCT 437 ROAD SEAL	15,002.70		
1241	VANCE BROS	VANCE BROS INC	336213	104546 AP	08/25/2023	3-133-5-00-303	8-40 ACCT 437 ROAD SEAL	15,289.08		
1241	VANCE BROS	VANCE BROS INC	336213	104546 AP	08/25/2023	3-133-5-00-303	8-40 ACCT 437 ROAD SEAL	15,111.06		
1241	VANCE BROS	VANCE BROS INC	336213	104546 AP	08/25/2023	3-133-5-00-303	8-40 ACCT 437 ROAD SEAL	14,236.44		
1241	VANCE BROS	VANCE BROS INC	336213	104546 AP	08/25/2023	3-133-5-00-303	8-40 ACCT 437 ROAD SEAL	15,007.86		
1241	VANCE BROS	VANCE BROS INC	336213	104546 AP	08/25/2023	3-133-5-00-303	8-41 ACCT 437 ROAD SEAL	15,123.96		
1241	VANCE BROS	VANCE BROS INC	336213	104546 AP	08/25/2023	3-133-5-00-303	8-41 ACCT 437 ROAD SEAL	14,837.58		
1241	VANCE BROS	VANCE BROS INC	336213	104546 AP	08/25/2023	3-133-5-00-303	8-41 ACCT 437 ROAD SEAL	15,011.90		
1241	VANCE BROS	VANCE BROS INC	336213	104546 AP	08/25/2023	3-133-5-00-303	8-41 ACCT 437 ROAD SEAL	14,553.78		
1241	VANCE BROS	VANCE BROS INC	336213	104546 AP	08/25/2023	3-133-5-00-303	8-41 ACCT 437 ROAD SEAL	14,646.66		
1241	VANCE BROS	VANCE BROS INC	336213	104546 AP	08/25/2023	3-133-5-00-303	8-41 ACCT 437 ROAD SEAL	14,935.62		
1241	VANCE BROS	VANCE BROS INC	336213	104546 AP	08/25/2023	3-133-5-00-303	8-41 ACCT 437 ROAD SEAL	14,896.92		
1241	VANCE BROS	VANCE BROS INC	336213	104546 AP	08/25/2023	3-133-5-00-303	8-41 ACCT 437 ROAD SEAL	14,847.90		
1241	VANCE BROS	VANCE BROS INC	336213	104546 AP	08/25/2023	3-133-5-00-303	8-41 ACCT 437 ROAD SEAL	14,651.82		
1241	VANCE BROS	VANCE BROS INC	336213	104546 AP	08/25/2023	3-133-5-00-303	8-42 ACCT 437 ROAD SEAL	15,195.64		
1241	VANCE BROS	VANCE BROS INC	336213	104546 AP	08/25/2023	3-133-5-00-303	8-42 ACCT 437 ROAD SEAL	15,018.18		
1241	VANCE BROS	VANCE BROS INC	336213	104546 AP	08/25/2023	3-133-5-00-303	8-42 ACCT 437 ROAD SEAL	14,633.76		
1241	VANCE BROS	VANCE BROS INC	336213	104546 AP	08/25/2023	3-133-5-00-303	8-42 ACCT 437 ROAD SEAL	14,303.52		
1241	VANCE BROS	VANCE BROS INC	336213	104546 AP	08/25/2023	3-133-5-00-303	8-42 ACCT 437 ROAD SEAL	14,228.70		
1241	VANCE BROS	VANCE BROS INC	336213	104546 AP	08/25/2023	3-133-5-00-303	8-42 ACCT 437 ROAD SEAL	14,374.64		
1241	VANCE BROS	VANCE BROS INC	336213	104546 AP	08/25/2023	3-133-5-00-303	8-42 ACCT 437 ROAD SEAL	14,774.10		
1241	VANCE BROS	VANCE BROS INC	336213	104546 AP	08/25/2023	3-133-5-00-303	8-42 ACCT 437 ROAD SEAL	14,783.86		
1241	VANCE BROS	VANCE BROS INC	336213	104546 AP	08/25/2023	3-133-5-00-303	8-42 ACCT 437 ROAD SEAL	469.92		
1241	VANCE BROS	VANCE BROS INC	336213	104546 AP	08/25/2023	3-133-5-00-303	8-42 ACCT 437 ROAD SEAL	14,687.94		
1241	VANCE BROS	VANCE BROS INC	336213	104546 AP	08/25/2023	3-133-5-00-303	8-43 ROAD SEAL	14,958.84		
1241	VANCE BROS	VANCE BROS INC	336213	104546 AP	08/25/2023	3-133-5-00-303	8-43 ROAD SEAL	14,951.10		
1241	VANCE BROS	VANCE BROS INC	336213	104546 AP	08/25/2023	3-133-5-00-303	8-43 ROAD SEAL	14,969.16		
1241	VANCE BROS	VANCE BROS INC	336213	104546 AP	08/25/2023	3-133-5-00-303	8-43 ROAD SEAL	14,914.98		

TYPES OF CHECKS SELECTED: * ALL TYPES

			P.O.NUMBER	CHECK#					
1241	VANCE BROS	VANCE BROS INC	336213	104546 AP	08/25/2023	3-133-5-00-303	8-43 ROAD SEAL	15,245.22	
1241	VANCE BROS	VANCE BROS INC	336213	104546 AP	08/25/2023	3-133-5-00-303	8-43 ROAD SEAL	14,651.26	
1241	VANCE BROS	VANCE BROS INC	336213	104546 AP	08/25/2023	3-133-5-00-303	8-43 ROAD SEAL	14,432.52	
1241	VANCE BROS	VANCE BROS INC	336213	104546 AP	08/25/2023	3-133-5-00-303	8-43 ROAD SEAL	14,914.98	
1241	VANCE BROS	VANCE BROS INC	336213	104546 AP	08/25/2023	3-133-5-00-303	8-43 ROAD SEAL	15,031.08	
1241	VANCE BROS	VANCE BROS INC	336213	104546 AP	08/25/2023	3-133-5-00-303	8-43 ROAD SEAL	14,909.82	
1241	VANCE BROS	VANCE BROS INC	336213	104546 AP	08/25/2023	3-133-5-00-303	8-43 ROAD SEAL	14,646.10	
							*** VENDOR	1241 TOTAL	689,707.20
							TOTAL FUND 133		710,881.78
648	COMMERCE BANK-COMMER	COMMERCE BANK-COMMERCIAL CARDS	336178	104510 AP	08/25/2023	3-136-5-00-203	IRON MOUNTAIN SHREDDING HSDJ42	4.32	
648	COMMERCE BANK-COMMER	COMMERCE BANK-COMMERCIAL CARDS	336178	104510 AP	08/25/2023	3-136-5-00-223	IRON MOUNTAIN SHREDDING HSDJ42	4.32	
648	COMMERCE BANK-COMMER	COMMERCE BANK-COMMERCIAL CARDS	336178	104510 AP	08/25/2023	3-136-5-00-243	IRON MOUNTAIN SHREDDING HSDJ42	8.64	
							*** VENDOR	648 TOTAL	17.28
7098	QUILL CORP	QUILL CORP	336205	104537 AP	08/25/2023	3-136-5-00-301	5645204 OFFICE SUPPLIES	13.73	
7098	QUILL CORP	QUILL CORP	336205	104537 AP	08/25/2023	3-136-5-00-321	5645204 OFFICE SUPPLIES	13.74	
							*** VENDOR	7098 TOTAL	27.47
							TOTAL FUND 136		44.75
648	COMMERCE BANK-COMMER	COMMERCE BANK-COMMERCIAL CARDS	336178	104510 AP	08/25/2023	3-137-5-00-320	8-8 LOCAL SVC AA:JW FILTERS,F	136.86	
648	COMMERCE BANK-COMMER	COMMERCE BANK-COMMERCIAL CARDS	336178	104510 AP	08/25/2023	3-137-5-00-320	8-8 LOCAL SVC AA:JW FILTERS,F	838.86	
							*** VENDOR	648 TOTAL	975.72
434	HAMM QUARR	HAMM QUARRIES	336137	104480 AP	08/23/2023	3-137-5-00-312	8-4 300467 ROCK	468.20	
434	HAMM QUARR	HAMM QUARRIES	336137	104480 AP	08/23/2023	3-137-5-00-312	8-4 300467 ROCK	209.84	
434	HAMM QUARR	HAMM QUARRIES	336137	104480 AP	08/23/2023	3-137-5-00-312	8-4 300467 ROCK	1,337.92	
434	HAMM QUARR	HAMM QUARRIES	336137	104480 AP	08/23/2023	3-137-5-00-312	8-4 300467 ROCK	3,794.85	
434	HAMM QUARR	HAMM QUARRIES	336137	104480 AP	08/23/2023	3-137-5-00-312	8-4 300467 ROCK	282.24	
							*** VENDOR	434 TOTAL	6,093.05
1780	LEXECO	LEXECO	336199	104531 AP	08/25/2023	3-137-5-00-312	8-9 PUBLIC WORKS ROCK	110,102.70	
1123	POMPMIDWEST	POMP'S TIRE SERVICE INC	336140	104483 AP	08/23/2023	3-137-5-00-321	8-7 1960724 TIRES	1,275.00	
							TOTAL FUND 137		118,446.47
648	COMMERCE BANK-COMMER	COMMERCE BANK-COMMERCIAL CARDS	336178	104510 AP	08/25/2023	3-138-5-00-227	COMM CORR KH:JUV/ADT/JCP	55.03	
							TOTAL FUND 138		55.03
648	COMMERCE BANK-COMMER	COMMERCE BANK-COMMERCIAL CARDS	336178	104510 AP	08/25/2023	3-144-5-00-2	COA:PALS,L&L,TRAINING,UTIL,C1+	798.76	
648	COMMERCE BANK-COMMER	COMMERCE BANK-COMMERCIAL CARDS	336178	104510 AP	08/25/2023	3-144-5-00-2	COA:DD:PET SUPPLIES,VET BILLS,	687.55	
648	COMMERCE BANK-COMMER	COMMERCE BANK-COMMERCIAL CARDS	336178	104510 AP	08/25/2023	3-144-5-00-2	COA:VR:PET FOOD, VET VISITS, F	846.81	
648	COMMERCE BANK-COMMER	COMMERCE BANK-COMMERCIAL CARDS	336178	104510 AP	08/25/2023	3-144-5-00-2	COA:MS:PET FOOD, VET BILLS,C1	58.00	
648	COMMERCE BANK-COMMER	COMMERCE BANK-COMMERCIAL CARDS	336178	104510 AP	08/25/2023	3-144-5-00-3	COA:PALS,L&L,TRAINING,UTIL,C1+	1,108.25	
648	COMMERCE BANK-COMMER	COMMERCE BANK-COMMERCIAL CARDS	336178	104510 AP	08/25/2023	3-144-5-00-3	COA:DD:PET SUPPLIES,VET BILLS,	205.34	
648	COMMERCE BANK-COMMER	COMMERCE BANK-COMMERCIAL CARDS	336178	104510 AP	08/25/2023	3-144-5-00-3	COA:VR:PET FOOD, VET VISITS, F	81.62	
648	COMMERCE BANK-COMMER	COMMERCE BANK-COMMERCIAL CARDS	336178	104510 AP	08/25/2023	3-144-5-00-3	COA:MS:PET FOOD, VET BILLS,C1	328.86	
							*** VENDOR	648 TOTAL	4,115.19
19474	KANSAS COUNTRY STORE	KANSAS COUNTRY STORE	336192	104524 AP	08/25/2023	3-144-5-00-3	PET FOOD FOR PALS PROGRAM	531.04	
19474	KANSAS COUNTRY STORE	KANSAS COUNTRY STORE	336192	104524 AP	08/25/2023	3-144-5-00-3	PET FOOD FOR PALS PROGRAM	44.50	
19474	KANSAS COUNTRY STORE	KANSAS COUNTRY STORE	336192	104524 AP	08/25/2023	3-144-5-00-3	PET FOOD FOR PALS PROGRAM	338.70	
19474	KANSAS COUNTRY STORE	KANSAS COUNTRY STORE	336192	104524 AP	08/25/2023	3-144-5-00-3	PET FOOD FOR PALS PROGRAM	182.85-	
							*** VENDOR	19474 TOTAL	731.39
							TOTAL FUND 144		4,846.58
20588	ADVANTAGE	ADVANTAGE PRINTING	336168	104495 AP	08/25/2023	3-145-5-00-303	ACCT 669 COA BUSINESS CARDS	260.00	

warrants by vendor

TYPES OF CHECKS SELECTED: * ALL TYPES

			P.O.NUMBER	CHECK#					
2621	CAFE	TERRY BOOKER	336174	104501 AP	08/25/2023	3-145-5-00-256	COA MEALS RESERVED 8/1 - 8/18	10,692.50	
2621	CAFE	TERRY BOOKER	336174	104501 AP	08/25/2023	3-145-5-00-256	COA MEALS RESERVED 8/1 - 8/18	13,338.00	
2621	CAFE	TERRY BOOKER	336174	104501 AP	08/25/2023	3-145-5-00-256	COA MEALS RESERVED 8/1 - 8/18	13,351.00	
*** VENDOR								2621 TOTAL	37,381.50
648	COMMERCE BANK-COMMER	COMMERCE BANK-COMMERCIAL CARDS	336178	104510 AP	08/25/2023	3-145-5-00-202	COA:PALS,L&L,TRAINING,UTIL,C1+	1,550.00	
648	COMMERCE BANK-COMMER	COMMERCE BANK-COMMERCIAL CARDS	336178	104510 AP	08/25/2023	3-145-5-00-208	IRON MOUNTAIN SHREDDING HSDJ42	64.45	
648	COMMERCE BANK-COMMER	COMMERCE BANK-COMMERCIAL CARDS	336178	104510 AP	08/25/2023	3-145-5-00-210	COA:SR:BACKGROUND CHECKS	80.00	
648	COMMERCE BANK-COMMER	COMMERCE BANK-COMMERCIAL CARDS	336178	104510 AP	08/25/2023	3-145-5-00-212	COA:PALS,L&L,TRAINING,UTIL,C1+	373.06	
648	COMMERCE BANK-COMMER	COMMERCE BANK-COMMERCIAL CARDS	336178	104510 AP	08/25/2023	3-145-5-00-212	COA:DD:PET SUPPLIES,VET BILLS,	26.55	
648	COMMERCE BANK-COMMER	COMMERCE BANK-COMMERCIAL CARDS	336178	104510 AP	08/25/2023	3-145-5-00-213	COA;DT;VEH MAINT	189.13	
648	COMMERCE BANK-COMMER	COMMERCE BANK-COMMERCIAL CARDS	336178	104510 AP	08/25/2023	3-145-5-00-246	COA:PALS,L&L,TRAINING,UTIL,C1+	33.29	
648	COMMERCE BANK-COMMER	COMMERCE BANK-COMMERCIAL CARDS	336178	104510 AP	08/25/2023	3-145-5-00-252	COA:VR:PET FOOD, VET VISITS, F	13.53	
648	COMMERCE BANK-COMMER	COMMERCE BANK-COMMERCIAL CARDS	336178	104510 AP	08/25/2023	3-145-5-00-252	COA:JP:MTG EPXENSE	12.53	
648	COMMERCE BANK-COMMER	COMMERCE BANK-COMMERCIAL CARDS	336178	104510 AP	08/25/2023	3-145-5-00-301	COA:PALS,L&L,TRAINING,UTIL,C1+	74.83	
648	COMMERCE BANK-COMMER	COMMERCE BANK-COMMERCIAL CARDS	336178	104510 AP	08/25/2023	3-145-5-00-304	COA:VR:PET FOOD, VET VISITS, F	36.53	
648	COMMERCE BANK-COMMER	COMMERCE BANK-COMMERCIAL CARDS	336178	104510 AP	08/25/2023	3-145-5-00-305	COA:PALS,L&L,TRAINING,UTIL,C1+	27.00	
648	COMMERCE BANK-COMMER	COMMERCE BANK-COMMERCIAL CARDS	336178	104510 AP	08/25/2023	3-145-5-00-345	COA:MS:PET FOOD, VET BILLS,C1	27.47	
648	COMMERCE BANK-COMMER	COMMERCE BANK-COMMERCIAL CARDS	336178	104510 AP	08/25/2023	3-145-5-00-750	COA:PALS,L&L,TRAINING,UTIL,C1+	2,422.62	
648	COMMERCE BANK-COMMER	COMMERCE BANK-COMMERCIAL CARDS	336178	104510 AP	08/25/2023	3-145-5-00-750	COA:TP:LEISURE&LEARNING	100.97	
648	COMMERCE BANK-COMMER	COMMERCE BANK-COMMERCIAL CARDS	336178	104510 AP	08/25/2023	3-145-5-05-202	COA:PALS,L&L,TRAINING,UTIL,C1+	12.37	
648	COMMERCE BANK-COMMER	COMMERCE BANK-COMMERCIAL CARDS	336178	104510 AP	08/25/2023	3-145-5-05-301	COA:MS:PET FOOD, VET BILLS,C1	10.20	
648	COMMERCE BANK-COMMER	COMMERCE BANK-COMMERCIAL CARDS	336178	104510 AP	08/25/2023	3-145-5-07-202	COA:PALS,L&L,TRAINING,UTIL,C1+	1.90	
648	COMMERCE BANK-COMMER	COMMERCE BANK-COMMERCIAL CARDS	336178	104510 AP	08/25/2023	3-145-5-07-302	COA:MS:PET FOOD, VET BILLS,C1	1.57	
*** VENDOR								648 TOTAL	5,058.00
4755	LEAV PAPER	LEAVENWORTH PAPER AND OFFICE S	336197	104529 AP	08/25/2023	3-145-5-00-301	CO ON AGING OFFICE SUPPLIES, P	17.40	
4755	LEAV PAPER	LEAVENWORTH PAPER AND OFFICE S	336197	104529 AP	08/25/2023	3-145-5-00-303	COA TONER CARTRIDGES	601.73	
4755	LEAV PAPER	LEAVENWORTH PAPER AND OFFICE S	336197	104529 AP	08/25/2023	3-145-5-00-303	CO ON AGING OFFICE SUPPLIES, P	352.25	
4755	LEAV PAPER	LEAVENWORTH PAPER AND OFFICE S	336197	104529 AP	08/25/2023	3-145-5-00-345	COA C1 CONSUMABLES	190.38	
4755	LEAV PAPER	LEAVENWORTH PAPER AND OFFICE S	336197	104529 AP	08/25/2023	3-145-5-05-301	COA C1 CONSUMABLES	70.71	
4755	LEAV PAPER	LEAVENWORTH PAPER AND OFFICE S	336197	104529 AP	08/25/2023	3-145-5-07-302	COA C1 CONSUMABLES	10.88	
*** VENDOR								4755 TOTAL	1,243.35
458	ROAD & BRIDGE	LEAV CO PUBLIC WORKS	336207	104539 AP	08/25/2023	3-145-5-00-213	COA VEHICLE MAINT	1,328.07	
458	ROAD & BRIDGE	LEAV CO PUBLIC WORKS	336207	104539 AP	08/25/2023	3-145-5-00-213	COA VEHICLE MAINT	715.54	
458	ROAD & BRIDGE	LEAV CO PUBLIC WORKS	336207	104539 AP	08/25/2023	3-145-5-00-213	COA VEHICLE MAINT	426.49	
458	ROAD & BRIDGE	LEAV CO PUBLIC WORKS	336207	104539 AP	08/25/2023	3-145-5-00-213	COA VEHICLE MAINT	933.53	
458	ROAD & BRIDGE	LEAV CO PUBLIC WORKS	336207	104539 AP	08/25/2023	3-145-5-00-213	COA VEHICLE MAINT	418.27	
458	ROAD & BRIDGE	LEAV CO PUBLIC WORKS	336207	104539 AP	08/25/2023	3-145-5-00-213	COA VEHICLE MAINT	784.62	
458	ROAD & BRIDGE	LEAV CO PUBLIC WORKS	336207	104539 AP	08/25/2023	3-145-5-00-213	COA VEHICLE MAINT	182.69	
*** VENDOR								458 TOTAL	4,789.21
TOTAL FUND 145									48,732.06
648	COMMERCE BANK-COMMER	COMMERCE BANK-COMMERCIAL CARDS	336178	104510 AP	08/25/2023	3-146-5-00-218	IRON MOUNTAIN SHREDDING CTHSE	64.62	
648	COMMERCE BANK-COMMER	COMMERCE BANK-COMMERCIAL CARDS	336178	104510 AP	08/25/2023	3-146-5-00-301	CO TREAS SPECIAL (MV)OFFICE SU	883.60	
648	COMMERCE BANK-COMMER	COMMERCE BANK-COMMERCIAL CARDS	336178	104510 AP	08/25/2023	3-146-5-00-301	CO TREAS SPECIAL (MV)OFFICE SU	336.61	
648	COMMERCE BANK-COMMER	COMMERCE BANK-COMMERCIAL CARDS	336178	104510 AP	08/25/2023	3-146-5-00-301	CO TREAS SPECIAL (MV)OFFICE SU	355.64	
648	COMMERCE BANK-COMMER	COMMERCE BANK-COMMERCIAL CARDS	336178	104510 AP	08/25/2023	3-146-5-00-301	CO TREAS SPECIAL (MV)OFFICE SU	97.98	
*** VENDOR								648 TOTAL	1,738.45
TOTAL FUND 146									1,738.45
7158	A-1 RENTAL	A-1 RENTAL	336131	104474 AP	08/23/2023	3-160-5-00-263	TRANSFER STATION MONTHLY TOILE	110.00	
1971	CAROLINA SOFTWARE	CAROLINA SOFTWARE	336175	104502 AP	08/25/2023	3-160-5-00-263	WASTEWORCS TICKETS	1,779.40	
1971	CAROLINA SOFTWARE	CAROLINA SOFTWARE	336175	104502 AP	08/25/2023	3-160-5-00-263	WASTEWORCS TICKETS	275.10	

TYPES OF CHECKS SELECTED: * ALL TYPES

		P.O.NUMBER	CHECK#							
								*** VENDOR	1971 TOTAL	2,054.50
5900	CIRBA SOLUTIONS	CIRBA SOLTUIONS SERVICES US, L	336177	104504 AP	08/25/2023	3-160-5-00-208	C08436 LARGE BATTERY RECYCLING	115.95		
648	COMMERCE BANK-COMMER	COMMERCE BANK-COMMERCIAL CARDS	336178	104510 AP	08/25/2023	3-160-5-00-201	SOLID WASTE:TS:PPE,MAINT,TNG,A	151.03		
648	COMMERCE BANK-COMMER	COMMERCE BANK-COMMERCIAL CARDS	336178	104510 AP	08/25/2023	3-160-5-00-202	SOLID WASTE:TS:PPE,MAINT,TNG,A	400.00		
648	COMMERCE BANK-COMMER	COMMERCE BANK-COMMERCIAL CARDS	336178	104510 AP	08/25/2023	3-160-5-00-213	SOLID WASTE JA:MAINT,PPE,OFC S	485.48		
648	COMMERCE BANK-COMMER	COMMERCE BANK-COMMERCIAL CARDS	336178	104510 AP	08/25/2023	3-160-5-00-213	SOLID WASTE:TS:PPE,MAINT,TNG,A	899.00		
648	COMMERCE BANK-COMMER	COMMERCE BANK-COMMERCIAL CARDS	336178	104510 AP	08/25/2023	3-160-5-00-301	SOLID WASTE JA:MAINT,PPE,OFC S	44.94		
648	COMMERCE BANK-COMMER	COMMERCE BANK-COMMERCIAL CARDS	336178	104510 AP	08/25/2023	3-160-5-00-301	SOLID WASTE:TS:PPE,MAINT,TNG,A	309.89		
648	COMMERCE BANK-COMMER	COMMERCE BANK-COMMERCIAL CARDS	336178	104510 AP	08/25/2023	3-160-5-00-305	SOLID WASTE JA:MAINT,PPE,OFC S	35.07		
648	COMMERCE BANK-COMMER	COMMERCE BANK-COMMERCIAL CARDS	336178	104510 AP	08/25/2023	3-160-5-00-305	SOLID WASTE:TS:PPE,MAINT,TNG,A	25.81		
								*** VENDOR	648 TOTAL	2,351.22
86	EVERGY	EVERGY KANSAS CENTRAL INC	336136	104479 AP	08/23/2023	3-160-5-00-210	ELEC SVC SOLID WASTE TRANSFER	23.90		
86	EVERGY	EVERGY KANSAS CENTRAL INC	336136	104479 AP	08/23/2023	3-160-5-00-210	ELEC SVC SOLID WASTE TRANSFER	208.87		
86	EVERGY	EVERGY KANSAS CENTRAL INC	336136	104479 AP	08/23/2023	3-160-5-00-210	ELEC SVC SOLID WASTE TRANSFER	371.09		
								*** VENDOR	86 TOTAL	603.86
458	ROAD & BRIDGE	LEAV CO PUBLIC WORKS	336207	104539 AP	08/25/2023	3-160-5-00-213	SOLID WASTE	637.79		
458	ROAD & BRIDGE	LEAV CO PUBLIC WORKS	336207	104539 AP	08/25/2023	3-160-5-00-304	SOLID WASTE	41.18		
								*** VENDOR	458 TOTAL	678.97
								TOTAL FUND 160		5,914.50

5637	CLEARWATER ENTERPRIS	CLEARWATER ENTERPRISES,LLC	336134	104477 AP	08/23/2023	3-195-5-00-290	20642-0321A774932307 GAS SERVI	2.85		
86	EVERGY	EVERGY KANSAS CENTRAL INC	336180	104512 AP	08/25/2023	3-195-5-00-290	ELEC SVC COMMUNITY CORRECTIONS	540.99		
2	WATER DEPT	WATER DEPT	336143	104486 AP	08/23/2023	3-195-5-00-290	WATER SVC COMMUNITY CORRECTION	48.99		
								TOTAL FUND 195		592.83

1867	REDWOOD TOXICOLOGY	REDWOOD TOXICOLOGY LABORATORY	336206	104538 AP	08/25/2023	3-196-5-00-201	ACCT 112368 CONFIRMATION TESTS	72.45		
								TOTAL FUND 196		72.45

648	COMMERCE BANK-COMMER	COMMERCE BANK-COMMERCIAL CARDS	336178	104510 AP	08/25/2023	3-198-5-05-201	EMS FIELD/OFC SUPPLY,VEH MAINT	270.25		
648	COMMERCE BANK-COMMER	COMMERCE BANK-COMMERCIAL CARDS	336178	104510 AP	08/25/2023	3-198-5-18-201	MAGAHA:EMPG, VEH MAINT	149.90		
								*** VENDOR	648 TOTAL	420.15
								TOTAL FUND 198		420.15

648	COMMERCE BANK-COMMER	COMMERCE BANK-COMMERCIAL CARDS	336178	104510 AP	08/25/2023	3-210-5-00-2	BG:WATER CONF,JC,CTHSE,HD,ANNE	9.16		
18885	HAYNES EQU	HAYNES EQUIPMENT CO	336185	104517 AP	08/25/2023	3-210-5-00-2	SVC CALL SD#1 - 160TH CT	1,516.00		
								TOTAL FUND 210		1,525.16

648	COMMERCE BANK-COMMER	COMMERCE BANK-COMMERCIAL CARDS	336178	104510 AP	08/25/2023	3-212-5-00-2	BG:WATER CONF,JC,CTHSE,HD,ANNE	9.18		
								TOTAL FUND 212		9.18

8466	KDHE PERMITS	KDHE-BUREAU OF WATER	336193	104525 AP	08/25/2023	3-214-5-00-4	SEWER DIST 3 DEBT SRVICE - PAY	35,105.81		
								TOTAL FUND 214		35,105.81

648	COMMERCE BANK-COMMER	COMMERCE BANK-COMMERCIAL CARDS	336178	104510 AP	08/25/2023	3-218-5-00-2	BG:WATER CONF,JC,CTHSE,HD,ANNE	9.16		
18963	SMITH & LO	SMITH & LOVELESS INC	336210	104542 AP	08/25/2023	3-218-5-00-2	10*10831 SD #5, VALVE	840.04		
								TOTAL FUND 218		849.20

8466	KDHE PERMITS	KDHE-BUREAU OF WATER	336138	104481 AP	08/23/2023	3-219-5-00-401	SEWER DIST 7 DEBT SERVICE PMT	11,959.11		
								TOTAL FUND 219		11,959.11

12074	KPT&A	KANSAS PROSECUTORS TRAINING &	336195	104527 AP	08/25/2023	3-406-5-00-2	2ND QUARTER	222.92		
12074	KPT&A	KANSAS PROSECUTORS TRAINING &	336195	104527 AP	08/25/2023	3-406-5-00-2	2ND QUARTER	171.55		

warrants by vendor

TYPES OF CHECKS SELECTED: * ALL TYPES

			P.O.NUMBER	CHECK#						
12074	KPT&A	KANSAS PROSECUTORS TRAINING &	336195	104527 AP	08/25/2023	3-406-5-00-2	2ND QUARTER		238.85	
							*** VENDOR	12074 TOTAL		633.32
							TOTAL FUND 406			633.32

2570	BOND ESCROW REFUND	KEVIN BOCK	336172	104499 AP	08/25/2023	3-503-5-00-2	REF ENTRANCE PERMIT 235TH ST		100.00	
							TOTAL FUND 503			100.00

1504	DELTA DENTAL OF KS	DELTA DENTAL OF KANSAS	336179	104511 AP	08/25/2023	3-510-2-00-942	51269-00001 AUGUST DENTAL PREM		19,469.70	
1504	DELTA DENTAL OF KS	DELTA DENTAL OF KANSAS	336179	104511 AP	08/25/2023	3-510-2-00-942	51269-00001 AUGUST DENTAL PREM		27.20	
1504	DELTA DENTAL OF KS	DELTA DENTAL OF KANSAS	336179	104511 AP	08/25/2023	3-510-2-00-942	51269-00001 AUGUST DENTAL PREM		1,796.96	
							*** VENDOR	1504 TOTAL		21,293.86
268	GEN DIGITAL	GEN DIGITAL, INC.	336184	104516 AP	08/25/2023	3-510-2-00-941	1247233 AUGUST LIFELOCK PREMIU		1,643.93	
							TOTAL FUND 510			22,937.79

							TOTAL ALL CHECKS			1,159,954.15

TYPES OF CHECKS SELECTED: * ALL TYPES

FUND SUMMARY

001	GENERAL	147,908.07
108	COUNTY HEALTH	15,111.42
112	EMPLOYEE BENEFIT	2,500.00
115	EQUIPMENT RESERVE	23,154.80
119	ROD TECHNOLOGY	3,588.13
123	JUVENILE CRIME PREVENTION	39.61
126	COMM CORR ADULT	543.31
127	COMM CORR ADULT NON GRANT	2,244.19
133	ROAD & BRIDGE	710,881.78
136	COMM CORR JUVENILE	44.75
137	LOCAL SERVICE ROAD & BRIDGE	118,446.47
138	JUV INTAKE & ASSESSMENT	55.03
144	PALS (PETS AND LOVING SENIORS	4,846.58
145	COUNCIL ON AGING	48,732.06
146	COUNTY TREASURER SPECIAL	1,738.45
160	SOLID WASTE MANAGEMENT	5,914.50
195	JUVENILE DETENTION	592.83
196	DRUG TEST & SUPERVISION FEES	72.45
198	SPECIAL GRANTS	420.15
210	SEWER DISTRICT 1: HIGH CREST	1,525.16
212	SEWER DISTRICT 2: TIMBERLAKES	9.18
214	SEWER DISTRICT 3: GLENWOOD	35,105.81
218	SEWER DIST #5	849.20
219	SEWER DIST #7: CEDAR LAKE SUB (FAIRMOUN	11,959.11
406	ATTORNEY TRAINING	633.32
503	ROAD & BRIDGE BOND ESCROW	100.00
510	PAYROLL CLEARING	22,937.79
	TOTAL ALL FUNDS	1,159,954.15

Agenda 8/30/2023
Checks dated 8/19-8/25

*****Hearing Required*****
Leavenworth County
Request for Board Action TSUP
DEV-23-109
Temporary Special Use Permit for Whiskey Ridge

Date: August 30, 2023
To: Board of County Commissioners
From: Planning & Zoning Staff

Department Head Review: John Jacobson, Reviewed

Additional Reviews as needed:

Budget Review Administrator Review Legal Review

Action Requested: Approve a request for a TSUP for three events located at 19051Tonganoxie Dr., Tonganoxie, KS 66086.

Analysis: Whiskey Ridge, LLC is requesting a TSUP for three events to be held at the property stated above. The three events will be held on September 9th, September 27th and September 29th through October 1st. Event attendees will vary 200 to 350 guests per event. The first two events will begin at 8:00 am on the day off and will end at 11:00 pm. The wedding will take place outdoors in the area indicated on their site plan and the reception will take place inside. Clean-up will begin after the event and continue on the next day from 8:00 am to 12:00 pm. They anticipate 10 people will be on the premises for clean-up. The applicant has an existing event structure that these events will be held out of with an existing parking lot that can hold up to 180 cars. The property also has an old farmhouse that will be utilized as a lodging facility associated with the events. Food will be provided by a third party. The applicant is in the process of obtaining a temporary liquor license to serve alcohol. The applicant has indicated that a fire sprinkler system is in the process of being installed and will have the local fire district inspect the system once finalized.

The third will have approximately 300-350 guests. The wedding will take place outdoors in the area indicated on their site plan and the reception will take place inside. Since this is a multi-day event, the proposed schedule would be that Friday the clients will have a rehearsal dinner for 100 guests. The wedding will take place on Saturday with approximately 300 guests. Sunday the clients will hold a farewell brunch (100 guests). Clean up will start after the brunch will end and extend to 2:00 pm. Food will be provided by a third party. The applicant is in the process of obtaining a temporary liquor license to serve alcohol. Due to the number of attendees, the applicant may have to utilize temporary overflow parking which has been shown on the site plan.

Recommendation: Staff recommends approval for Case No. DEV-23-109, TSUP for Whiskey Ridge LLC to hold three events, subject to the following condition:

1. The hours of operation for the events shall be limited to 8:00 AM to 11:00 PM on September 9, September 23 and September 29 through October 1, 2023;
2. The hours of operation for clean-up shall be limited to 11:00 PM to 12:00 AM on September 9, September 23, September 29 and September 30, 2023 and 8:00 AM to 2:00 PM on September 10, September 24, and October 1, 2023;
3. There shall be no on-street parking allowed;
4. Traffic shall not queue onto the public road network when entering the site;
5. Lighting generated from the events shall be limited to 0.00 foot-candles net gain, as measured from the property line;
6. Noise generated from the events shall be limited to 60 dBs, as measured from the property line;

7. Fire watch personnel shall be on duty during any and all times the building may be occupied, until the applicant provides verification that a fire suppression system has been installed and accepted by the Authority having jurisdiction.
8. Parking on the site shall not encroach on any required fire lanes.
9. The gate shall remain open prior to, during and after an event to allow for traffic flow.
10. The applicant shall comply with all Local, State and Federal Requirements.
11. The TSUP shall be limited to the Narrative received on August 11, 2023 and additional information provided on August 15 and August 21, 2023.
12. The applicant shall comply with follow memorandums:
 - a. Chuck Magaha, Emergency Management – August 3, 2023
13. Failure to comply with all conditions shall void the Temporary Special Use Permit.

Alternatives:

1. Deny Case No. DEV-23-109, TSUP for Whiskey Ridge LLC to hold three events; or
2. Modify the conditions for Case No. DEV-23-109, TSUP for Whiskey Ridge LLC to hold three events.

Budgetary Impact:

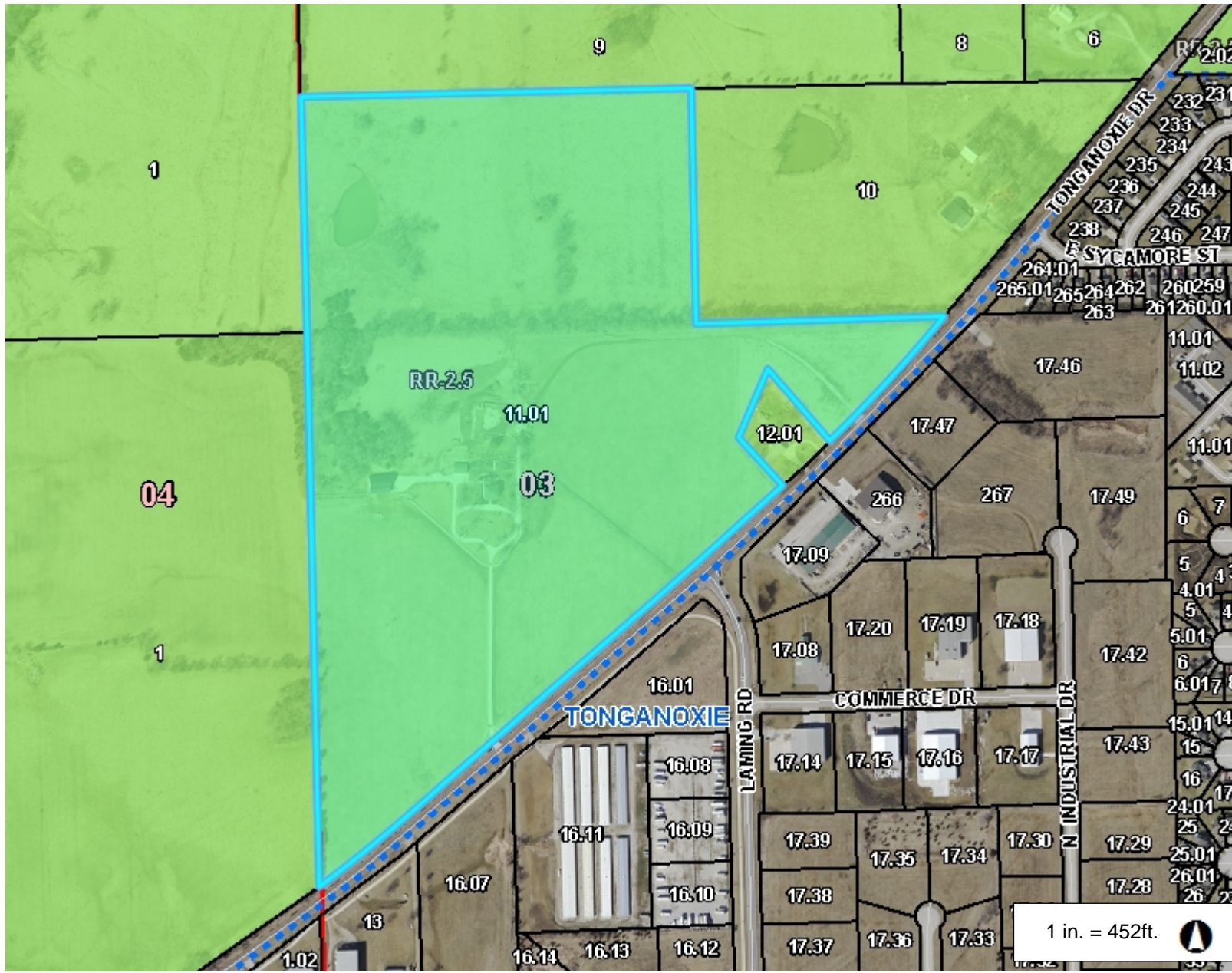
- Not Applicable
- Budgeted item with available funds
- Non-Budgeted item with available funds through prioritization
- Non-Budgeted item with additional funds requested

Total Amount Requested:

\$0.00

Additional Attachments: Proposed Configuration

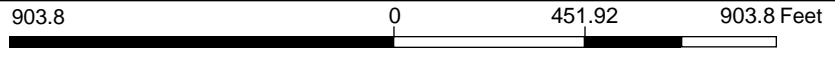
DEV-22-155 Whiskey Ridge Event Center



Legend

- Parcel Number
- Parcel
- City Limit Line
- Major Road
- <all other values>
- 70
- Road
- Railroad
- Section
- Section Boundaries
- County Boundary
- Zoning
 - B-1
 - B-2
 - B-3
 - I-1
 - I-2
 - I-3
 - MXD
 - PC
 - PI
 - PR-1
 - PR-2
 - PR-3
 - PUD
 - R-1

1 in. = 452ft.



This Cadastral Map is for informational purposes only. It does not purport to represent a property boundary survey of the parcels shown and shall not be used for conveyances or the establishment of property boundaries.
THIS MAP IS NOT TO BE USED FOR NAVIGATION

Notes

APPLICANT INFORMATION

Applicant: Dan / Cindy Lynch
Authorized Agent:
Mailing Address: 19751 214th St., Tonganoxie, KS 66206
Company or Group: Whiskey Ridge, LLC
Phone Number: (413) 488-9306
Email Address: deryn@grmml.com

EVENT INFORMATION - ALL property owners must be listed on this form.

Record Owner of Property: Orion, LLC
Location: 19051 Tonganoxie Dr, Tonganoxie, KS 66206
Type of Event or Use: Wedding
Date of Event or Use: Sept 9, 2023, Sept 23, 2023, Sept. 28-30, 2023
Hours of Operation:

Event Type (circle one):

- Type 1. Fund-raising or non-commercial events for nonprofit religious, educational, or community service organizations...
Type 2. Fund-raising or non-commercial events for for-profit organizations...
Type 3. Fireworks stands either non-profit or for-profit...
Type 4. Public or private events intended primarily for entertainment or amusement...
Type 5. The temporary placement of a laydown yard, portable asphalt or concrete plant and attendant materials...

Number of Guests: 200-320 Sheriff Approval: Yes No N/A
Number of Parking Spaces: 180 Number of Vehicles: 180
Number of Employees/Staff: 2

I (We), realize that this application cannot be processed unless it is completely filled in, submitted with all relevant and/or requested documentation and accompanied by the appropriate fee.

Orion, LLC - Cindy Lynch
Property Owner printed name
Cindy Lynch
Signature of Property Owner
Cindy Lynch
Applicant / Authorized Agent printed name
Signature of Applicant / Authorized Agent

ATTACHMENT A

TEMPORARY SPECIAL USE PERMIT APPLICATION

Including Fireworks Stands

FOR THE UNINCORPORATED AREA OF
LEAVENWORTH COUNTY, KANSAS

**A PRE-APPLICATION CONFERENCE IS REQUIRED PRIOR TO SUBMITTAL OF ANY
APPLICATION**

This is an application for a Special Event Permit. This form must be completed and filed in accordance with the Leavenworth County Zoning & Subdivision Regulations. An incomplete application will not be accepted. The non-refundable application fee, as set by the Board of County Commissioners, shall accompany this request.

DEADLINE: All application materials shall be submitted at least thirty (30) days prior to the event.

Application Requirements - The following items are required, upon submittal, for a Temporary Special Use Permit:

- a) Payment of application fee.
- b) A completed application form. (**Attachment A**)
- c) Owner Authorization (**Attachment B**)
- d) A site plan that includes facilities used, parking areas, traffic flow, and any other required information.
- e) All required supporting documents, including, but not limited to a Narrative and traffic information, that was detailed by the Planning and Zoning Staff during or after the Pre-application meeting.
- f) In the event that Sheriff/Deputy presence is needed to control traffic, the applicant shall coordinate payment and scheduling directly with the Sheriff's department. This documentation shall be included with the application submittal.
- g) A tax clearance certificate from the state and a paid tax receipt from Leavenworth County.

Notes

- a) The application shall require review and approval by the Road and Bridge Superintendent if the event is to be held on public roads or public rights-of-way.
- b) Not more than three (3) Temporary Special Use Permits per parcel shall be granted each year. (BOCC Resolution 2015-35; September 24, 2015).
- c) Temporary Special Use Permit Types 4 & 5 must be approved by the Board of County Commissioners.
- d) Review of a submitted application is subject to the Professional Review Fee Reimbursement policy, see **Attachment C**. (BOCC Resolution 2020-46, November 18, 2020)

Written Narrative Description: A written narrative description of the proposed use must be submitted that addresses, at minimum:

- A description of the event and the proposed infrastructure needed for the event.
- Any reasons that the proposed event could cause conflict with other parcels surrounding the site in question.
- The steps to be taken to cause the event to be compatible with other parcels near the site in question.
- The hours of operation, traffic routes and expected traffic volumes, staffing levels, methods of operation, and available/proposed off-street parking.
- The number of parking spaces available on the property and the reasoning behind the number provided.
- The duration of the event.
- Any other such reasonable information about the proposed use that would be necessary or helpful for the impact of the proposed event to be fully evaluated and considered.

For more information contact:
Leavenworth County Department of Planning and Zoning
300 Walnut St., Suite 212
Leavenworth, Kansas 66048
pz@leavenworthcounty.gov
913-684-0465

Narrative

There are three events scheduled at Whiskey Ridge in September 2023. As we will not be through the process of getting the SUP, I am applying for a Temporary SUP for these events.

September 9, 2023

This event is a wedding with 200-220 guests. The wedding ceremony will take place outdoors and the reception will be inside the venue. Ten to fifteen people will set up starting at 8am. Cleanup will start after the reception which will end at 11pm. Cleanup will continue on Sunday a.m. and be completed by noon. Approximately ten people will be present to clean up. We have a parking lot available for 180 cars. Food will be served at the event by caterers hired by the wedding party. A warming kitchen is available for their use. Bartenders will be present to serve alcohol included in the "wedding package". We have applied for a temporary liquor license for this purpose.

September 23, 2023

This event is a wedding with 200-250 guests. The wedding ceremony will take place outdoors and the reception will be inside the venue. Ten to fifteen people will set up starting at 8am. Cleanup will start after the reception which will end at 11pm. Approximately ten people will be present to clean up after the reception. We have a parking lot available for 180 cars. Food will be served at the event by caterers hired by the wedding party. A warming kitchen is available for their use. Bartenders will be present to serve alcohol included in the "wedding package". We have applied for a temporary liquor license for this purpose.

September 28-30, 2023

This event is a wedding with 300-350 guests. The wedding ceremony will take place outdoors and the reception will be inside the venue. Ten to fifteen people will set up starting at 8am on the 28th. The event will be a weekend of celebrations including Friday, Saturday and Sunday. Friday will include a welcome gathering for guests and the rehearsal dinner (100 people). The actual wedding will be on Saturday with the reception to follow (300 people). Sunday will include the farewell brunch before guests leave (100 people). Cleanup will start after brunch which will end at 2pm. Approximately ten people will be present to clean up. We have a parking lot available for 180 cars. Food will be served at the event by caterers hired by the wedding party. A warming kitchen is available for their use. Bartenders will be present to serve alcohol included in the "wedding package". We have applied for a temporary liquor license for this purpose. Servers will also be present throughout the weekend, approximately 5 per event. These people will be provided by and paid by the wedding party.

All events comply with the site plans on file.

Follow up on Chuck Magaha review.

1. Our contingent plan for severe weather is to have a weather radio on site to monitor. If a tornado warning is called we would move all guests to the kitchen, storage room, and bathrooms which are all interior without windows. We may also use the basement in the main house to take cover.
2. In case of a fire, there are seven doors marked with lighted Exit signs that will be used to evacuate guests. We also have two large garage doors at either end of the venue that can be opened electronically or manually to help with evacuation.
3. We have a microphone to address guests about dangers and alarms in case of fire.
4. Emergency responders at Stranger Township and Tonganoxie Fire Department have our emergency contact information.
5. Per RWD #9, a fire hydrant and 6" water line running to our property is not feasible. The water line would have to be run from the main line at Parallel and Tonganoxie Drive (approximately 4,000 feet). We have opted to install a holding tank and pump at the property for use with fire sprinklers.

Public Works for TSUP 8/14/23

1. I got the days wrong in the previous narrative. The days of the last event in September will be from September 29th through October 1st. There will be one event each day. The Saturday event, the wedding, will consist of approximately 300 - 350 people.
2. The expected number of trips for each event will be as follows...Friday - 50 guest's cars with 5 event staff. Saturday - 150 guest's cars with 10 event staff and 5 vendors. Sunday - 50 guest's cars with 5 event staff.
3. The current parking lot is more than enough to accommodate a maximum capacity event. Staff and vendors will use the driveway next to the house for parking.
4. Both gates to the property will be open during the entirety of the weekend events and all events.
5. The parking lot consists of 180 stalls. Cars can be directed to park East to West or North to South. Emergency vehicle access is open from both driveways.

Comments for Public Works regarding SUP 8/21/2023

1. Guest house, drive, parking, overflow parking all included in the attached layout.

5. The maximum capacity as we currently understand it, could include up to 400 guests. There could be an additional 20 people (max) for support staff and vendors for an event of that size. That would mean an additional 40 trips. This would also be the same maximum as with any size event. Some events will only have 5 additional people (support staff and vendors). I'm guessing 20 people would be the maximum for any event.

6. The attached layout should explain this better. The gravel driveway consists of 180 parking spaces for guests. We will have overflow parking for guests in the grass (area is marked). Vendor and staff parking will be by the house either in the driveway or grassy area marked. At no time will street parking be allowed. We are expecting 2 people per car for guests and 1 person per car for support staff and vendors.

8. The driveway parking at the house will be for event staff and vendors only. There will not be any driveway parking at the guest entrance. Emergency vehicles can come through either gate to get to the venue or house. Both are open without cars parked in the drive.

Comments for Public Works regarding TSUP 8/21/2023

2. For the last event in September we are expecting 300-350 guests for the wedding on Saturday. With the average number of riders per car at 2 people, that would take up 150-175 parking spaces in the 180 space lot. The event staff and vendors will not park in the guest lot, they will park in the driveway/grass lot near the house. This is marked on the aerial.
3. The staff/vendor parking area can fit a minimum of 50 cars. Well above the space needed for a maximum capacity event.

Allison, Amy

From: Cindy Lynch <dcryry@gmail.com>
Sent: Monday, August 21, 2023 2:48 PM
To: Allison, Amy
Subject: Re: DEV-23-109 Whiskey Ridge TSUP Review Comments
Attachments: doc14412620230821144427.pdf; Public Works for SUP 8_21_2023 (1).pdf; Public Works TSUP 8_21_2023.pdf

Notice: This email originated from outside this organization. Do not click on links or open attachments unless you trust the sender and know the content is safe.

Hi Amy,

Here is the information you requested. I've attached responses for Public Works.

To answer Planning and Zonings questions:

1. For the final event of September we are expecting 300-350 guests for the largest event of the weekend, which is the wedding on Saturday. We are also estimating 20 additional people for staff and vendors. Staff and vendors will park in the space near the house in either the driveway or the grass area as marked on the aerial that's attached. We are estimating that will include 20 cars in the section of the property.

2. I can verify that the sprinkler system and 15,000 gallon tank have been installed and are in place for the pump that is expected to be installed tomorrow, Tuesday, August 22. I know that this date has changed because of shipping issues with the pump. As soon as it is installed, we will contact Tonganoxie Township Fire Department for inspection. We will get the inspection for you ASAP.

2.

On Fri, Aug 18, 2023 at 8:41 AM Allison, Amy <AAllison@leavenworthcounty.gov> wrote:

Good Morning Cindy,

Attached are comments from the following:

- Public Works – 8/17/2023
- Planning & Zoning – 8/15/2023
- Emergency Management – 8/15/2023
- City of Tonganoxie – 8/17/2023



Laura Kelly, Governor
Mark A. Burghart, Secretary
www.ksrevenue.org

CERTIFICATE OF TAX CLEARANCE

Whiskey Ridge, LLC
DBA as Whiskey Ridge Event Center

ISSUE DATE
08/01/2023

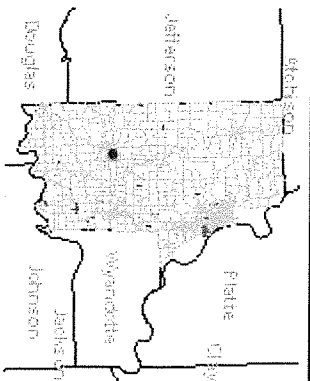
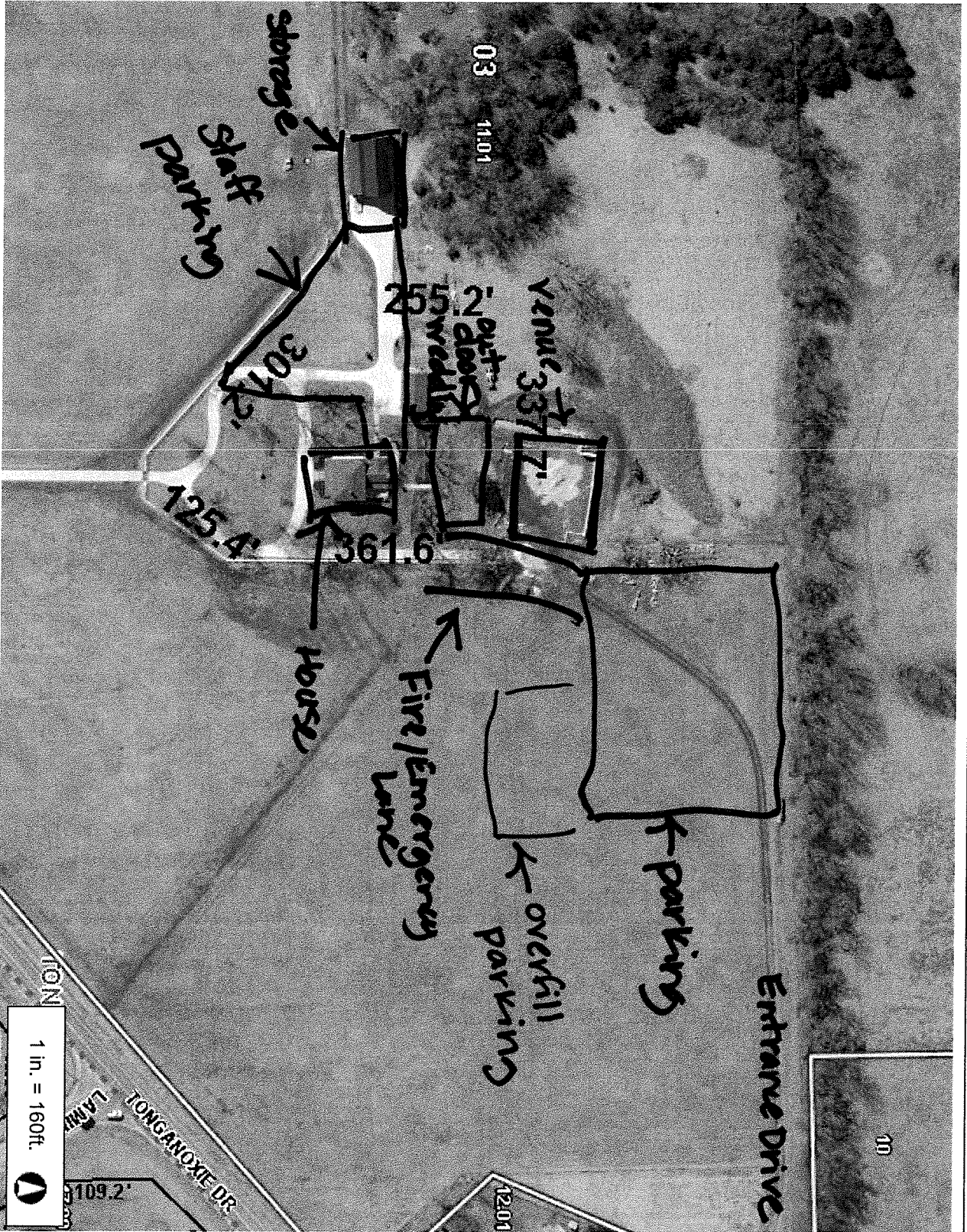
TRANSACTION ID
T88A-GFX6-MR7A

CONFIRMATION NUMBER
CCP2-G3RH-CHYH

TAX CLEARANCE VALID THROUGH 10/30/2023

*Verification of this certificate can be obtained on our website, www.ksrevenue.org,
or by calling the Kansas Department of Revenue at 785-296-3199*

Leavenworth County, KS



- Legend**
- Address Point
 - Parcel Number
 - Lot Line
 - Parcel
 - City Limit Line
 - Major Road
 - <all other values>
 - Road
 - <all other values>
 - PRIVATE
 - Railroad
 - Section
 - Section Boundaries
 - County Boundary

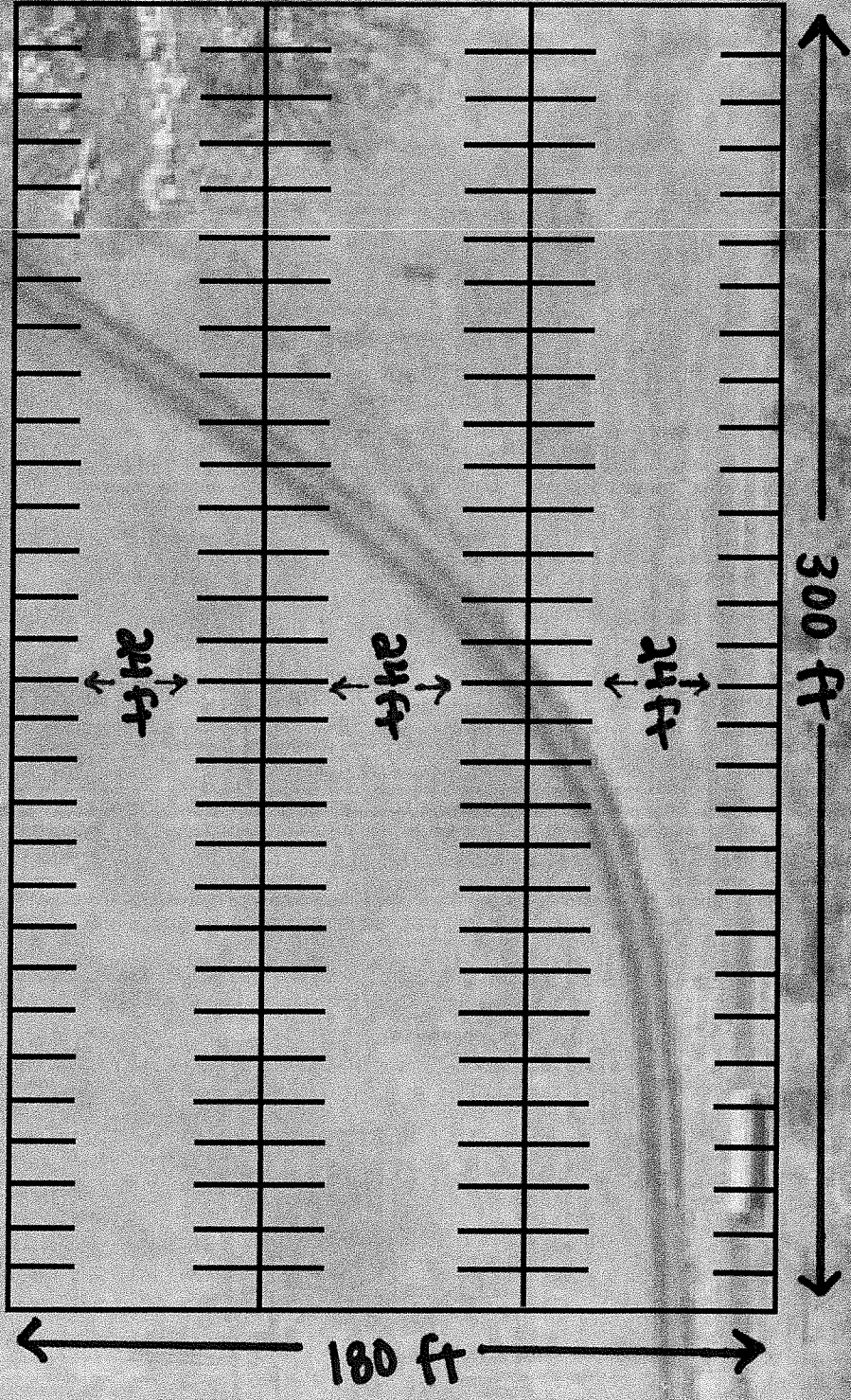
Notes

This Cadastral Map is for informational purposes only. It does not purport to represent a property boundary survey of the parcels shown and shall not be used for conveyances or the establishment of property boundaries.
THIS MAP IS NOT TO BE USED FOR NAVIGATION

1 in. = 160ft.

320.5
0
160.23
320.5 Feet

FENCE
24ft



300 ft

180 ft

PARKING SPACES

30 SPACES PER ROW

10ft wide

6 ROWS

18ft long

1101

180 PARKING SPACES TOTAL

ABOUT 1.24 ACRES

(54,000 sqft)

19051 Tonganoxie Drive
Tonganoxie, Kansas 66086
Unplatted (58.7 acres)
192030000011010
Onsite Wastewater System Design (Chamber System)
For Orison LLC ("Digger" Jim Manderscheid)
March 23, 2023 page 1 of 2



Existing residence with four bedrooms (short-term stays) and event building for approximately 300 people/event.

Estimated flow:

Residence with four bedrooms – no proposed change to existing system, separate from event building system.

Proposed event building, approximately 300 guests/event and one event per week

Onsite kitchen, but no onsite food preparation, catering only

Event space has one kitchen sink, bar sink, shower, five lavatory sinks, four toilets, two urinals

Peak flow/event = 300 people/event x 3 gpd/meal served [1] = 900 gal/event (dinning hall, catered)

Average flow = peak flow/6 days* = 900 gpd/6 days* = 150 gpd (* sized for 1 events/week)

Site soils [2]: 7303 Martin silty clay loam, 3 to 7% slopes (house, event building, onsite wastewater system)
7252 Grundy silty clay loam, 1 to 3% slopes (southeast of site towards Tonganoxie Drive)
NRCS Rating for septic tank absorption field: very limited
Reasons for rating: Slow water movement, depth to saturated zone

Soil profile by Digger Jim 8/4/21, two holes located northeast of proposed event space, south of tree line

0" – 15" very dark grayish brown color, no redoximorphic features, silty clay loam texture, moderate blocky structure, moist friable consistency, many roots, easy to dig, conv. system loading rate 0.4 gpd/ft²
15" – 41" dark yellowish brown color, no redoximorphic features, clay loam texture, weak blocky structure, moist firm consistency, few roots, harder to dig, conventional system loading rate 0.2 gpd/ft²
41" – 63" very dark grayish brown color, "few mottles", clay loam texture, weak blocky structure, moist firm consistency, no roots, harder to dig, conventional system loading rate 0.2 gpd/ft²

Design Loading rate: 0.2 gpd/ft² based on soil profile

Note: Area of soil profile location used for gravel parking lot for event building. Onsite wastewater system (1,500 gal septic tank with three, 100 ft chamber absorption laterals) installed mid-July 2022 and per accessory building permit #SEW-22-139. Soil profile 8/4/21 approximately 300 ft north of installed onsite wastewater system. If event building wastewater system is expanded in the future, recommend new soil profile south of system installed July 2022.

Residence with four bedroom (short-term stays) – no proposed change to existing system

Event building system:

Calculated absorption area: 150 gpd / 0.2 gpd/ft² = 750 sf

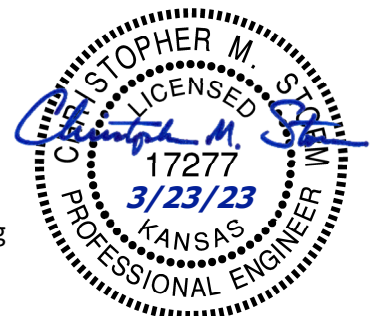
Based 3 ft camber width, required chamber lateral length = 750 sf / 3 ft = 250 ft

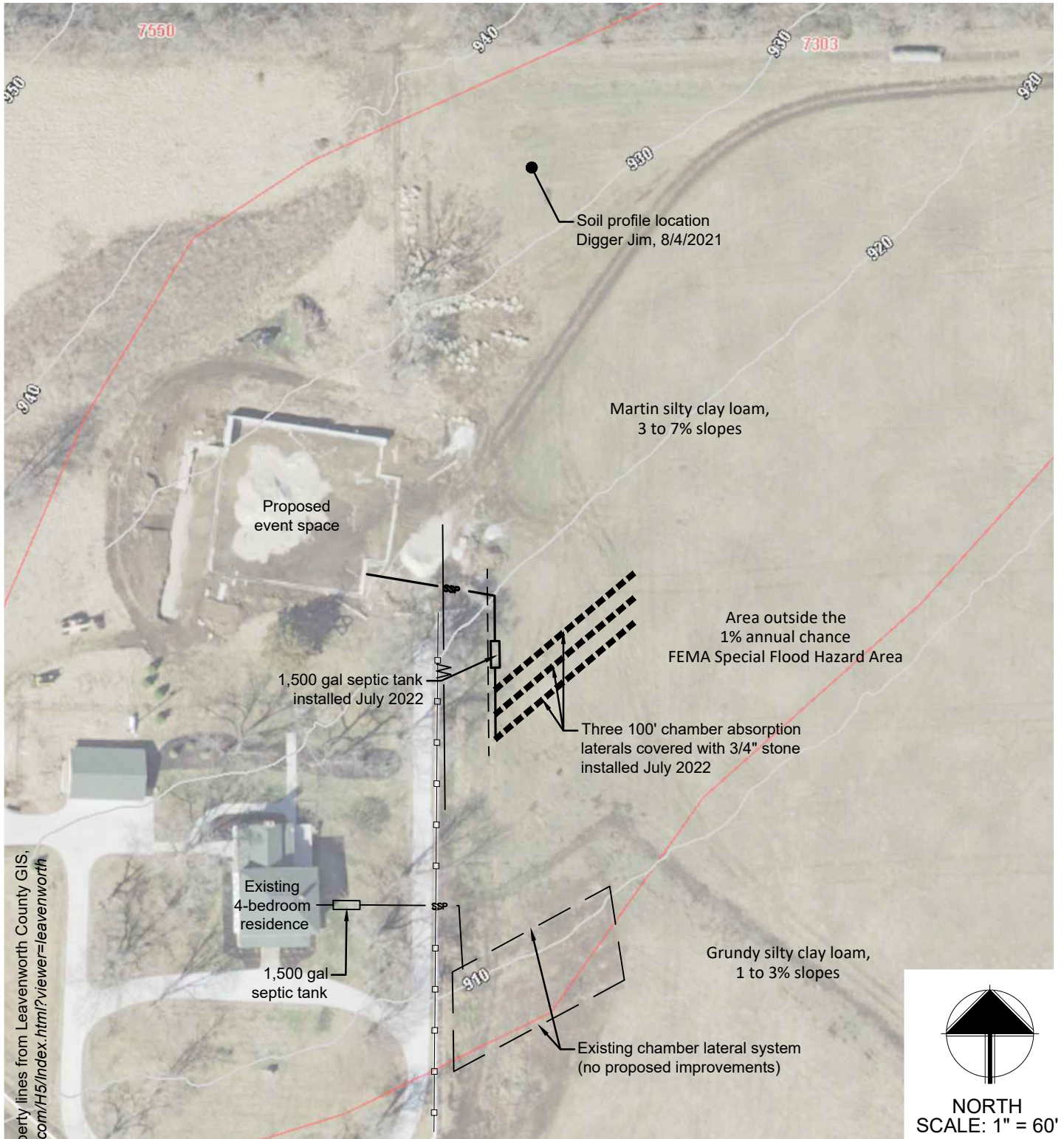
Total chamber lateral installed = 300 ft, installed system should have sufficient capacity for events

Note: Onsite wastewater system may be overloaded by seasonal precipitation, more frequent events, and higher than estimated water usage. Recommend monitoring system prior to events and during wet weather to ensure system is functioning properly.

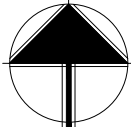
[1] Office of Water, Office of Research and Development, U.S. Environmental Protection Agency. Onsite Wastewater Treatment System Manual, EPA/625/R-00/008, Table 3-5, February 2002.

[2] Soil Survey Staff, Natural Resources Conservation Service, United States Department of Agriculture. Web Soil Survey. Available online at the following link: <https://websoilsurvey.sc.egov.usda.gov/>, Accessed July 7, 2021.





2022 Aerial image and property lines from Leavenworth County GIS, leavenworthgis.integritygis.com/H5/index.html?viewer=leavenworth



NORTH
SCALE: 1" = 60'



19051 Tonganoxie Drive
 Tonganoxie, Kansas 66086
 Unplatted (58.7 acres)
 1920300000011010
 Onsite Wastewater System Design
 Orison LLC ("Digger" Jim Manderscheid)
 page 2 of 2 March 23, 2023



Sight Distance Check

The sight distance for the entrance to a proposed event center located at 19051 TONGANOXIE DR, Tonganoxie, KS 66086 was checked for conformance to AASHTO standards.

The entrance will be located on the west side of Tonganoxie Drive north of Laming Road. Tonganoxie Drive is classified as an arterial roadway with a posted speed limit of 55 mph.

A site visit was conducted on January 4, 2023 to field verify the actual sight distances at the entrance. The AASHTO requirements for sight distance are shown in the following exhibits.

Metric				US Customary			
Design speed (km/h)	Stopping sight distance (m)	Intersection sight distance for passenger cars		Design speed (mph)	Stopping sight distance (ft)	Intersection sight distance for passenger cars	
		Calculated (m)	Design (m)			Calculated (ft)	Design (ft)
20	20	41,7	45	15	80	165,4	170
30	35	62,6	65	20	115	220,5	225
40	50	83,4	85	25	155	275,6	280
50	65	104,3	105	30	200	330,8	335
60	85	125,1	130	35	250	385,9	390
70	105	146,0	150	40	305	441,0	445
80	130	166,8	170	45	360	496,1	500
90	160	187,7	190	50	425	551,3	555
100	185	208,5	210	55	495	606,4	610
110	220	229,4	230	60	570	661,5	665
120	250	250,2	255	65	645	716,6	720
130	285	271,1	275	70	730	771,8	775
				75	820	826,9	830
				80	910	882,0	885

Note: Intersection sight distance shown is for a stopped passenger car to turn left onto a two-lane highway with no median and grades 3 percent or less. For other conditions, the time gap must be adjusted and required sight distance recalculated.

Exhibit 9-55. Design Intersection Sight Distance—Case B1—Left Turn From Stop

Metric				US Customary			
Design speed (km/h)	Stopping sight distance (m)	Intersection sight distance for passenger cars		Design speed (mph)	Stopping sight distance (ft)	Intersection sight distance for passenger cars	
		Calculated (m)	Design (m)			Calculated (ft)	Design (ft)
20	20	36.1	40	15	80	143.3	145
30	35	54.2	55	20	115	191.1	195
40	50	72.3	75	25	155	238.9	240
50	65	90.4	95	30	200	286.7	290
60	85	108.4	110	35	250	334.4	335
70	105	126.5	130	40	305	382.2	385
80	130	144.6	145	45	360	430.0	430
90	160	162.6	165	50	425	477.8	480
100	185	180.7	185	55	495	525.5	530
110	220	198.8	200	60	570	573.3	575
120	250	216.8	220	65	645	621.1	625
130	285	234.9	235	70	730	668.9	670
				75	820	716.6	720
				80	910	764.4	765

Note: Intersection sight distance shown is for a stopped passenger car to turn right onto or cross a two-lane highway with no median and grades 3 percent or less. For other conditions, the time gap must be adjusted and required sight distance recalculated.

Exhibit 9-58. Design Intersection Sight Distance—Case B2—Right Turn from Stop and Case B3—Crossing Maneuver

The sight distance at the entrance meets the AASHTO requirements. Vehicles turning left onto Tonganoxie Drive have an unobstructed view that extends south past Laming Road. For vehicles turning to the right, the view is unobstructed to the E Sycamore Street intersection.

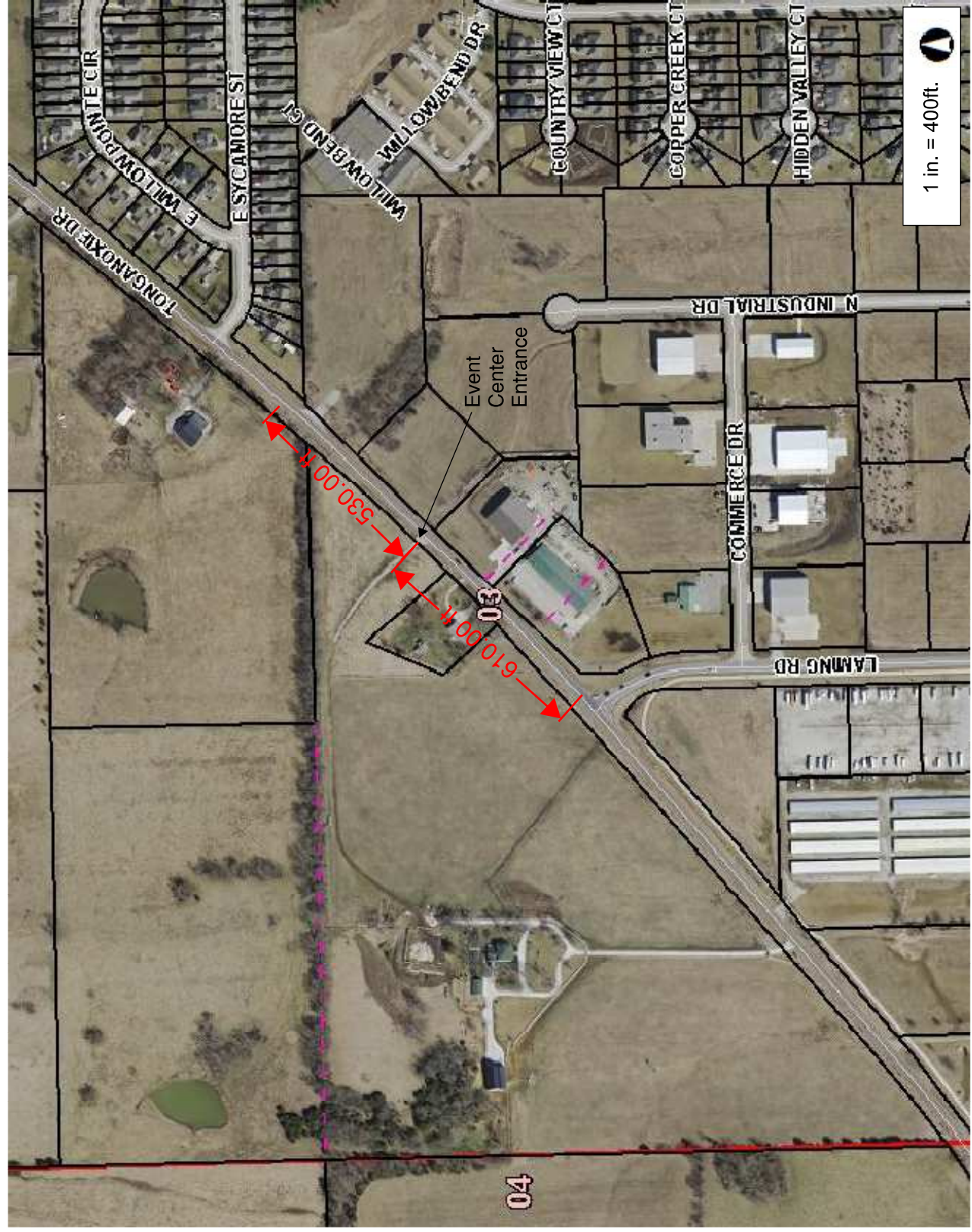


Leavenworth County, KS



- Legend**
- Lot Line
 - Parcel
 - Major Road
 - <all other values>
 - 70
 - Road
 - Railroad
 - Section
 - Section Boundaries
 - County Boundary

Notes



800.0 0 400.00 800.0 Feet

1 in. = 400ft.

This Cadastral Map is for informational purposes only. It does not purport to represent a property boundary survey of the parcels shown and shall not be used for conveyances or the establishment of property boundaries.

THIS MAP IS NOT TO BE USED FOR NAVIGATION



E Sycamore St



Laming Rd

MEMO

To: Krystal Voth
From: Chuck Magaha
Subject: Event Center Whiskey Ridge
Date: August 3, 2023

Krystal, thank you for the opportunity in review the recent special use permit submitted by Dan and Cindy Lynch for an event center on their property. The suggestion I have would be the requirement of a contingent plan for the applicant in all hazard planning pertaining to their facility. The center would be responsible to provide safe shelter in the event of dangerous weather or other emergencies as they have provided some details of the location in the existing site. The applicant needs to consider fire protection, IE. Escape routes posted, notification procedures and emergency contacts to be posted throughout the facilities. The applicant needs to be able to address the public during severe weather, sheltering in the event of tornados or high winds or flood. An all hazard weather radio needs to be placed in the facility and monitored for impending alerts that may affect the area. Smoke detectors placed throughout the gathering points of the center. A sign posted on the outside of the facility of emergency contacts for emergency responders to make contact if the applicant is not present during the emergency. I would like to see a Fire Hydrant placed at the base of the land owners driveway along Tonganoxie Drive for fire suppression on a 6" water line. I have no further comments to make at this time.

Note: 8/3/2023-This is my original response to share regarding the facility. With the owners providing the fire sprinkler system still would not eliminate the need for a fire hydrant.

Thanks

Chuck

Allison, Amy

From: Mark B <stfdchief1760@gmail.com>
Sent: Thursday, August 3, 2023 9:04 AM
To: Allison, Amy
Cc: Magaha, Chuck; Anderson, Kyle; Miller, Jamie; Patzwald, Joshua; Brown, Misty; amanda.holloway@freestate.coop; Rural Water District 9 lvrwd9; George Brajkovic; Noll, Bill; Mitch Pleak; McAfee, Joe; PZ
Subject: Re: DEV-23-109 Temporary Special Use Permit – Whiskey Ridge

Notice: This email originated from outside this organization. Do not click on links or open attachments unless you trust the sender and know the content is safe.

Stranger Township Fire Department has no issues with this request.

Mark Billquist
Stranger Township Fire Chief

On Wed, Aug 2, 2023 at 4:39 PM Allison, Amy <AAllison@leavenworthcounty.gov> wrote:

Good Afternoon,

The Department of Planning and Zoning has received an application for a Temporary Special Use Permit regarding three events on September 9, 23 & 28-30th, 2023 at an event center located at 19051 Tonganoxie Drive.

The Planning Staff would appreciate your written input in consideration of the above request. Please review the attached information and forward any comments to us by Tuesday, August 15, 2023.

If you have any questions or need additional information, please contact me at (913) 684-0465 or at Aallison@leavenworthcounty.gov

Thank you,

Amy Allison, AICP

Deputy Director

Planning & Zoning

Leavenworth County

913.364.5757

Disclaimer

This message and any attachments are intended only for the use of the recipient or their authorized representative. The information provided in this email is limited in scope and response detail by available information, current zoning and subdivision regulations. Depending on the level of development, the applicable regulations can change. Final approval cannot be granted until a complete application has been submitted, reviewed and approved by the governing body. Nothing in this message or its contents should be interpreted to authorize or conclude approval by Leavenworth County.

--

Mark Billquist

Stranger Township Fire Chief

Midwest Regional Treasurer 10-33 Foundation

[913-369-0510](tel:913-369-0510) mobile

stfdchief1760@gmail.com

"Darkness cannot drive out darkness; only light can do that. Hate cannot drive out hate; only love can do that." - Martin Luther King Jr.

Allison, Amy

From: Amanda Tarwater <amanda.tarwater@freestate.coop>
Sent: Wednesday, August 9, 2023 2:38 PM
To: Allison, Amy
Subject: RE: DEV-23-109 Temporary Special Use Permit – Whiskey Ridge

Notice: This email originated from outside this organization. Do not click on links or open attachments unless you trust the sender and know the content is safe.

FreeState Electric has no objection to this request.

Thank you,

Amanda Tarwater
Member Accounts Coordinator



1-800-794-1989 | www.freestate.coop

From: Allison, Amy <AAllison@leavenworthcounty.gov>
Sent: Wednesday, August 2, 2023 4:40 PM
To: Magaha, Chuck <cmagaha@lvsheriff.org>; Anderson, Kyle <KAnderson@leavenworthcounty.gov>; Miller, Jamie <JMiller@leavenworthcounty.gov>; Patzwald, Joshua <jpatzwald@lvsheriff.org>; Brown, Misty <MBrown@leavenworthcounty.gov>; 'Mark B' <stfdchief1760@gmail.com>; Amanda Tarwater <amanda.tarwater@freestate.coop>; 'Rural Water District 9 lvrwd9' <lvrwd9@gmail.com>; 'George Brajkovic' <gbrajkovic@tonganoxie.org>; Noll, Bill <BNoll@leavenworthcounty.gov>; 'Mitch Pleak' <mpleak@olsson.com>; McAfee, Joe <JMcAfee@leavenworthcounty.gov>
Cc: PZ <PZ@leavenworthcounty.gov>
Subject: RE: DEV-23-109 Temporary Special Use Permit – Whiskey Ridge

Warning: This message originated outside of the FEC organization. Do not click links or open attachments unless you have validated the sender and know the content is safe. <="" span="">

Good Afternoon,

The Department of Planning and Zoning has received an application for a Temporary Special Use Permit regarding three events on September 9, 23 & 28-30th, 2023 at an event center located at 19051 Tonganoxie Drive.

The Planning Staff would appreciate your written input in consideration of the above request. Please review the attached information and forward any comments to us by Tuesday, August 15, 2023.

If you have any questions or need additional information, please contact me at (913) 684-0465 or at Aallison@leavenworthcounty.gov

Allison, Amy

From: Patzwald, Joshua
Sent: Friday, August 11, 2023 8:33 AM
To: Allison, Amy
Subject: RE: RE: DEV-23-110 Special Use Permit – Whiskey Ridge Event Center

Ref 23-109 and 23-110, the Sheriff's Office has no objection to this permits. We have met with the owners previously and discussed our concerns.

From: Allison, Amy <AAllison@leavenworthcounty.gov>
Sent: Wednesday, August 2, 2023 4:44 PM
To: Magaha, Chuck <cmagaha@lvsheriff.org>; Anderson, Kyle <KAnderson@leavenworthcounty.gov>; Miller, Jamie <JMiller@leavenworthcounty.gov>; Patzwald, Joshua <jpatzwald@lvsheriff.org>; Brown, Misty <MBrown@leavenworthcounty.gov>; 'Mark B' <stfdchief1760@gmail.com>; 'amanda.holloway@freestate.coop' <amanda.holloway@freestate.coop>; 'Rural Water District 9 lvrwd9' <lvrwd9@gmail.com>; 'George Brajkovic' <gbrajkovic@tonganoxie.org>
Cc: PZ <PZ@leavenworthcounty.gov>
Subject: RE: DEV-23-110 Special Use Permit – Whiskey Ridge Event Center

Good Afternoon,

The Department of Planning and Zoning has received an application for a Special Use Permit regarding an event center at 19051 Tonganoxie Drive.

The Planning Staff would appreciate your written input in consideration of the above request. Please review the attached information and forward any comments to us by Tuesday, August 15, 2023.

If you have any questions or need additional information, please contact me at (913) 684-0465 or at Aallison@leavenworthcounty.gov

Thank you,

Amy Allison, AICP
Deputy Director
Planning & Zoning
Leavenworth County
913.364.5757

Disclaimer

This message and any attachments are intended only for the use of the recipient or their authorized representative. The information provided in this email is limited in scope and response detail by available information, current zoning and subdivision regulations. Depending on the level of development, the applicable regulations can change. Final approval cannot be granted until a complete application has been submitted, reviewed and approved by the governing body. Nothing in this message or its contents should be interpreted to authorize or conclude approval by Leavenworth County.

Allison, Amy

From: George Brajkovic <gbrajkovic@tonganoxie.org>
Sent: Wednesday, August 16, 2023 4:04 PM
To: Allison, Amy
Subject: RE: DEV-23-109 Temporary Special Use Permit – Whiskey Ridge

Notice: This email originated from outside this organization. Do not click on links or open attachments unless you trust the sender and know the content is safe.

Amy-

My apology for the delayed response. Tonganoxie does not have any issue with the application.

George

From: Allison, Amy <AAllison@leavenworthcounty.gov>
Sent: Wednesday, August 2, 2023 4:40 PM
To: Magaha, Chuck <cmagaha@lvsheriff.org>; Anderson, Kyle <KAnderson@leavenworthcounty.gov>; Miller, Jamie <JMiller@leavenworthcounty.gov>; Patzwald, Joshua <jpatzwald@lvsheriff.org>; Brown, Misty <MBrown@leavenworthcounty.gov>; 'Mark B' <stfdchief1760@gmail.com>; 'amanda.holloway@freestate.coop' <amanda.holloway@freestate.coop>; 'Rural Water District 9 lvrwd9' <lvrwd9@gmail.com>; George Brajkovic <gbrajkovic@tonganoxie.org>; Noll, Bill <BNoll@leavenworthcounty.gov>; 'Mitch Pleak' <mpleak@olsson.com>; McAfee, Joe <JMcAfee@leavenworthcounty.gov>
Cc: PZ <PZ@leavenworthcounty.gov>
Subject: RE: DEV-23-109 Temporary Special Use Permit – Whiskey Ridge

Good Afternoon,

The Department of Planning and Zoning has received an application for a Temporary Special Use Permit regarding three events on September 9, 23 & 28-30th, 2023 at an event center located at 19051 Tonganoxie Drive.

The Planning Staff would appreciate your written input in consideration of the above request. Please review the attached information and forward any comments to us by Tuesday, August 15, 2023.

If you have any questions or need additional information, please contact me at (913) 684-0465 or at AAllison@leavenworthcounty.gov

Thank you,

Amy Allison, AICP
Deputy Director
Planning & Zoning
Leavenworth County
913.364.5757

Disclaimer

This message and any attachments are intended only for the use of the recipient or their authorized representative. The information provided in this email is limited in scope and response detail by available information, current zoning and subdivision regulations. Depending on the level of development, the applicable regulations can change. Final approval cannot be granted until a complete application has been submitted, reviewed

Allison, Amy

From: Rural Water District 9 lvrwd9 <lvrwd9@gmail.com>
Sent: Friday, August 18, 2023 3:15 PM
To: Mark B
Cc: Allison, Amy; Magaha, Chuck; Anderson, Kyle; Miller, Jamie; Patzwald, Joshua; Brown, Misty; amanda.holloway@freestate.coop; George Brajkovic; Noll, Bill; Mitch Pleak; McAfee, Joe; PZ
Subject: Re: DEV-23-109 Temporary Special Use Permit – Whiskey Ridge

Notice: This email originated from outside this organization. Do not click on links or open attachments unless you trust the sender and know the content is safe.

LVRWD9 does not have any issues at this time with Whiskey Ridge receiving a Temporary Special Use Permit.

On Thu, Aug 3, 2023 at 9:04 AM Mark B <stfdchief1760@gmail.com> wrote:
Stranger Township Fire Department has no issues with this request.

Mark Billquist
Stranger Township Fire Chief

On Wed, Aug 2, 2023 at 4:39 PM Allison, Amy <AAllison@leavenworthcounty.gov> wrote:

Good Afternoon,

The Department of Planning and Zoning has received an application for a Temporary Special Use Permit regarding three events on September 9, 23 & 28-30th, 2023 at an event center located at 19051 Tonganoxie Drive.

The Planning Staff would appreciate your written input in consideration of the above request. Please review the attached information and forward any comments to us by Tuesday, August 15, 2023.

If you have any questions or need additional information, please contact me at (913) 684-0465 or at AAllison@leavenworthcounty.gov

Thank you,

Amy Allison, AICP

Deputy Director

Planning & Zoning

Leavenworth County

913.364.5757

Disclaimer

This message and any attachments are intended only for the use of the recipient or their authorized representative. The information provided in this email is limited in scope and response detail by available information, current zoning and subdivision regulations. Depending on the level of development, the applicable regulations can change. Final approval cannot be granted until a complete application has been submitted, reviewed and approved by the governing body. Nothing in this message or its contents should be interpreted to authorize or conclude approval by Leavenworth County.

--

Mark Billquist

Stranger Township Fire Chief

Midwest Regional Treasurer 10-33 Foundation

[913-369-0510](tel:913-369-0510) mobile

stfdchief1760@gmail.com

"Darkness cannot drive out darkness; only light can do that. Hate cannot drive out hate; only love can do that." - Martin Luther King Jr.

--

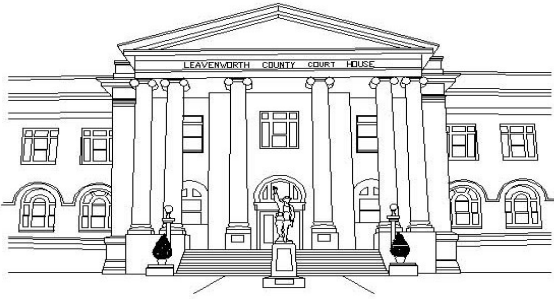
Thanks and have a great day,



Karen Armstrong

District Manager

913-845-3571



COUNTY OF LEAVENWORTH

Department of Public Works

300 Walnut, Suite 007

Leavenworth, Kansas 66048-2815

Phone (913) 684-0470

Fax (913) 684-0473

August 22, 2023

Whiskey Ridge TSUP DEV-23-109 – Public Works Review

The Public Works Department have reviewed the following documents:

- 23.08.02 Aerial View Site Map
- 23.08.02 Application
- 23.08.15 Additional Information from Applicant
- 23.08.21 Response Letter
- 23.08.21 Parking Layout

Below are comments from the received documents listed above. Direct any questions to Amy Allison at aallison@leavenworthcounty.gov.

Tonganoxie Rd. is a two-lane hard surfaced roadway.

County has reported the barn has been constructed under a separate permit.

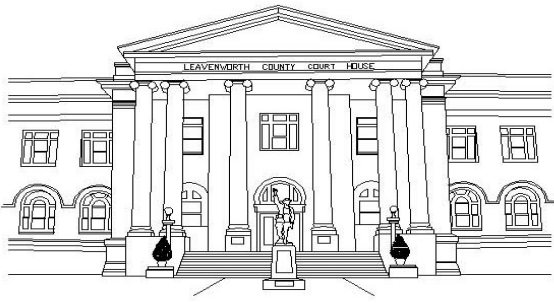
Public Work Comments:

1. Olsson Comment (08.11.23): Application proposes an event running from Sept. 28-30. Sept. 28 and 29 are weekdays. Provide additional information on this event – is this one event with single entry/exit or three separate events (1 per day)? If this is a max capacity event (320 attendees) are several periods of entry/exit at max traffic volume expected?

Applicant Response (08.15.23): I got the days wrong in the previous narrative. The days of the last event in September will be from September 29th through October 1st. There will be one event each day. The Saturday event, the wedding, will consist of approximately 300 - 350 people.

Olsson Response (08.17.23): Noted, no further comment.

2. Confirm expected trips for a maximum capacity event. Total number of trips should include guests trips as well as support staff (event staff, catering, trash, and etc.). State the number of expected commercial vehicle trips. Provide the assumed number of guests per vehicle for an event.



COUNTY OF LEAVENWORTH

Department of Public Works

300 Walnut, Suite 007

Leavenworth, Kansas 66048-2815

Phone (913) 684-0470

Fax (913) 684-0473

Applicant Response (08.15.23): The expected number of trips for each event will be as follows...Friday - 50 guest's cars with 5 event staff. Saturday - 150 guest's cars with 10 event staff and 5 vendors. Sunday - 50 guest's cars with 5 event staff.

Olsson Response (08.17.23): The total number of guests is not consistent with the application dated August 2, 2023 and the provided narrative. The narrative lists 300-350 guests at one of the events (guests was 320 in the application. It appears that it is assumed that there will be two guests per vehicles. For a 350 guest event this would be 175 vehicles, plus 10 event staff and 5 vendors for a total of 190 vehicles on site during the event. Confirm that adequate parking is provided; the lot is expected to accommodate 180 vehicles.

Applicant Response (08.21.23): For the last event in September we are expecting 300-350 guests for the wedding on Saturday. With the average number of riders per car at 2 people, that would take up 150-175 parking spaces in the 180 space lot. The event staff and vendors will not park in the guest lot, they will park in the driveway/grass lot near the house. This is marked on the aerial.

Olsson Response (08.22.23): Planning and Zoning Department to confirm event parking on grass is allowed. Planning and Zoning Department to confirm with the fire department regarding parking along driveway and on grass. Layout provided indicates overflow parking, fire/emergency lane, venue, and staff parking locations. Layout is not to scale and adequate space can not be confirmed. Main parking lot layout doesn't include driveway or aisle widths for confirmation.

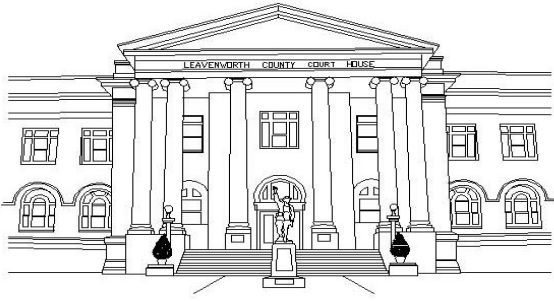
3. 180 parking stalls are proposed. Based on expected ridership per vehicle is this adequate parking for a maximum capacity event, including support staff. During the events will support staff being using the same parking lot as guests?

Applicant Response (08.15.23): The current parking lot is more than enough to accommodate a maximum capacity event. Staff and vendors will use the driveway next to the house for parking.

Olsson Response (08.17.23): See above, including staff 190 vehicles can be expected on site during a maximum capacity event. Confirm adequate parking space is available in the driveway to accommodate staff/vendor parking.

Applicant Response (08.21.23): The staff/vendor parking area can fit a minimum of 50 cars. Well above the space needed for a maximum capacity event.

Olsson Response (08.22.23): Planning and Zoning Department to confirm event parking on grass is allowed. Planning and Zoning Department to confirm with the fire department regarding parking



COUNTY OF LEAVENWORTH

Department of Public Works

300 Walnut, Suite 007

Leavenworth, Kansas 66048-2815

Phone (913) 684-0470

Fax (913) 684-0473

along driveway and on grass. Layout provided indicates overfill parking, fire/emergency lane, venue, and staff parking locations. Layout is not to scale and adequate space can not be confirmed. Main parking lot layout doesn't include driveway or aisle widths for confirmation.

4. Confirm that the access drive is not gated. Is there any guidance from fire/emergency services regarding how the gate should operate during an event.

Applicant Response (08.15.23): Both gates to the property will be open during the entirety of the weekend events and all events.

Olsson Response (08.17.23): No further comment.

5. Two images of a parking layout are provided. Please confirm which drawing is proposed for this site. One image illustrates approximately 168 stalls, the other 180 stalls. Provided stalls should support parking for maximum capacity event.
- North/south drive aisles should be provided within the parking lot.
 - Access to the lot from the driveway should not be restricted. Access to emergency vehicle parking should not be restricted.

Applicant Response (08.15.23): The parking lot consists of 180 stalls. Cars can be directed to park East to West or North to South. Emergency vehicle access is open from both driveways.

Olsson Response (08.17.23): This is consistent with the second parking lot layout. No further comment.

6. From a traffic perspective the gate needs to remain open prior to/during/after an event due to concerns of no space for a vehicle to queue at the entrance and to prevent queueing on the public road due to the gate being closed.

Leavenworth County Request for Board Action

Date: August 30, 2023
To: Board of County Commissioners
From: Connie Harmon, Director

Additional Reviews as needed:

Budget Review **Administrator Review** **Legal Review**

Action Requested: Approval for the *Council on Aging* to enter a Memorandum of Agreement with The University of Kansas KU Jayhawk Global – Osher Institute

Recommendation: Approval

Analysis: The University of Kansas KU Jayhawk Global – Osher Institute provides non-credit enrichment courses. These courses are fee-based and are typically comprised of three class sessions with each session meeting weekly for two hours for a total of six contact hours.

The Osher program is responsible for hiring instructors, overhead fees and general marketing expenses associated with promoting the course and program. The Council on Aging would be responsible for any community marketing through already existing channels, providing a venue for the class, and supplying a host to for the class to take attendance, distribute handouts and email an attendance roster to the Osher Institute.

This agreement would allow the COA to provide continuing education classes as another facet of the Leisure & Learning program at no additional cost to the County.

Alternatives: Table, Deny, Approve

Budgetary Impact:

- Not Applicable
- Budgeted item with available funds
- Non-Budgeted item with available funds through prioritization
- Non-Budgeted item with additional funds requested

Total Amount Requested: This is a cost-neutral engagement for the *Council on Aging* as classes would be scheduled during COA hours of operation.

Additional Attachments: Memorandum of Understanding;

MEMORANDUM OF AGREEMENT

Between

The University of Kansas

KU Jayhawk Global - Osher Institute

And

Leavenworth County Council on Aging

Fall 2023

This agreement constitutes a contract between the parties named above and specifies the responsibilities of each party. The purpose of this contract is to offer Osher Lifelong Learning Institute (Osher) programs at the Leavenworth County Council on Aging through a cooperative agreement.

SECTION I: Responsibilities of KU Jayhawk Global - Osher Institute

The University of Kansas will:

- A. Provide noncredit enrichment courses, the topic of which we would present for your approval. An Osher course usually comprises three class sessions with each session meeting weekly for two hours for a total of six contact hours. This format may vary depending on course and instructor needs.
- B. Hire and compensate all course instructors.
- C. Identify Leavenworth County Council on Aging in publicity materials and on its website.
- D. Provide all registration services.
- E. Notify Leavenworth County Council on Aging at least three days in advance of the course start date if the course is cancelled or changed.
- F. Design course evaluations and share results with Leavenworth County Council on Aging.
- G. Osher will pay for general marketing expenses associated with promoting the Osher Lifelong Learning Institute at KU, including but not limited to, catalogs and other printed promotional materials, print advertising, electronic marketing, and the Osher website housed on the KU Jayhawk Global – Osher Institute website.
- H. Osher will pay direct and indirect costs, including but not limited to, instructors/speakers/performers' fees, Osher staff salaries and benefits, overhead fees payable to KU and KU Jayhawk Global – Osher Institute, registration processing fees, credit card fees and marketing expenses.

- I. Convene one of more meetings between Osher staff and Leavenworth County Council on Aging staff to assess progress and plan for the future.

SECTION II: Responsibilities of Leavenworth County Council on Aging.

Leavenworth County Council on Aging will:

- A. Provide community publicity and marketing, as deemed appropriate by Leavenworth County Council on Aging to promote the program and enhance enrollment.
- B. Provide a venue for courses, including classroom space, equipped with a computer, projector, screen, and public address system. Free and easily accessible parking for participants will also be provided.
- C. Provide a Leavenworth County Council on Aging representative who will be on-site during class time to address technological and logistical issues, as needed.
- D. Provide a Leavenworth County Council on Aging volunteer host who will take attendance, distribute handouts, and email the attendance roster to KU Jayhawk Global – Osher Institute.
- E. Attend one or more meetings between Osher staff and Leavenworth County Council on Aging staff to assess progress and plan for the future.

SECTION III: Program Changes, Cancellations or Rescheduling, and Dispute Resolution Procedures

- A. KU Jayhawk Global – Osher Institute and Leavenworth County Council on Aging acknowledge that, as executed, this contract constitutes their complete agreement as to the terms contained herein. The parties agree that this contract may be changed or modified only in a writing or writings executed by both KU Jayhawk Global – Osher Institute and Leavenworth County Council on Aging.
- B. Any disagreements between the University of Kansas and Leavenworth County Council on Aging about the satisfactory execution of the terms of this Memorandum of Agreement will be negotiated by the Vice Provost, Jayhawk Global, or her designee, and the Director of Leavenworth County Council on Aging, or her designee.

SECTION IV: Liability Responsibility

Neither the State of Kansas nor any agency thereof shall hold harmless or indemnify any contractor for any liability whatsoever.

SECTION V: Non-Discrimination

All parties agree that in the performance of this agreement there will be no discrimination against students, instructors, employees, or other persons relating to race, color, sex, religion, creed, age, national origin, sexual orientation, or disability.

SECTION VI: Confidentiality

The confidentiality of student or participant records shall be maintained at all times. To the extent that such records are subject to the Federal Educational Rights and Privacy Act, KU Jayhawk Global – Osher Institute and Leavenworth County Council on Aging shall maintain such records in accordance therewith.

SECTION VII: Instructional Materials, Audio/Videotaping

- A. All instructional materials developed by the University of Kansas, including handouts, slides, and other materials used in this program, are the property of the University of Kansas and are exclusively reserved for use in programs conducted by the University.
- B. Audio recording or video recording of any portion of this program is prohibited, unless a written agreement which specifies ownership and future uses is signed by the Vice Provost, Jayhawk Global, or her designee, the Director of Leavenworth County Council on Aging, or her designee, and the instructor.

[SIGNATURE PAGE FOLLOWS]

SECTION VIII: Approval

The terms of this Memorandum of Agreement are firm if approved by Leavenworth County Council on Aging prior to September 8th.

APPROVED

For KU Jayhawk Global – Osher Institute:

Linda Kehres

Linda Kehres
Director
Osher Lifelong Learning Institute at KU

Aug 16, 2023

Date

Stacy Cordell

Stacy Cordell
Assistant Vice Provost
Academic & Professional Programs

Aug 21, 2023

Date

Emily Zentner

Emily Zentner
Assistant Vice Provost
Finance & Business Operations

Aug 21, 2023

Date

For Leavenworth County Council on Aging:

Connie Harmon
Director

Date

**WORK SESSION
MATERIAL ONLY**



NEWS RELEASE

FOR IMMEDIATE RELEASE

August 23, 2023

News Contact: Kimberly Qualls, (785) 213-4717; qualls@kansascounties.org

What LAVTR Means for Kansans and Kansas Counties

Topeka, Kan. – Local Ad Valorem Tax Reduction (LAVTR) Funding has existed in Kansas statutes for many years, with the first formal introduction in [KSA 79-2959](#) in 1965. Per statute, LAVTR funds are calculated by a percentage of the total state sales and compensating use tax to local governments. LAVTR funding and distribution amounts are set by statute, 65 percent is distributed based on population and 35 percent is distributed based on property tax valuations.

LAVTR in Kansas has not received any contributions since 2003. The last time the Kansas Legislature considered funding LAVTR was 2004. What does this mean for Kansas Counties? This has increasingly placed the burden of revenue generation on local property taxes, particularly in counties that do not have a large retail presence to allow them to generate funds to supplement the county budget through a countywide sales tax. Kansas counties and cities have lost over \$1.7B in revenue from LAVTR alone since 2001 (through 2022).

How does LAVTR benefit Kansas residents? Though property tax relief via a reduction in the mill levy. With LAVTR in place, monies sent from the State of Kansas to local governments are directly applied to lowering property tax levies. This time-tested partnership—started in 1965 and stopped in 2003—provides dollar for dollar reductions in property tax bills. This partnership is a far better way to influence property tax rates than by arbitrary controls such as caps on assessed valuations or tax and spending lids on local governments.

There was a recent bit of positive light on the Kansas LAVTR horizon. During the 2023 Kansas Legislative session, LAVTR discussions resurfaced, after a nearly 20-year silent void. An amendment to the budget was proposed and passed by the House to fund LAVTR, but ultimately the amendment failed to move forward in the Senate.

So, where do we go from here? We must talk about LAVTR. To do this, we must educate about LAVTR and the importance of LAVTR funding to Kansas Counties and to Kansas residents. The Kansas Association of Counties has created and launched a comprehensive [LAVTR Advocacy Toolkit for Kansas Counties](#) to assist in educating the public, legislators, and Kansas County personnel on what LAVTR is, how LAVTR works, and why funding LAVTR is a benefit for all. This toolkit features a variety of educational videos and informational resources as shown below:

- [Local Ad Valorem Tax Reduction \(LAVTR\) County Comment Article Series: What is LAVTR? | LAVTR Part 1: A History Lesson | Part 2: Learning from Loss | Part 3: So What Now?](#)
- [The Tale of LAVTR in Kansas \(Narrated Video\)](#)
- [The Tale of LAVTR \(Scripted PowerPoint Presentation\)](#)
- [The Truth About LATVR \(Narrated Video\)](#)
- [LAVTR FAQs](#)
- [Local Ad Valorem Tax Reduction \(LAVTR\) Talking Points & Funding History](#)
- [Kansas County Collection of Property Tax - Where Does the Money Go?](#)
- [Understanding Your Property Tax Bill](#)
- [What is a Mill?](#)

The **LAVTR Advocacy Toolkit** is located on KAC's website [here](#). Additional advocacy tools will be added in the upcoming near future, so be sure to check back at the link above.

The Kansas Association of Counties is a quasi-public agency, which seeks to advance the public interest by promoting effective, responsive county government in Kansas. Founded in 1975, as an instrumentality of its member counties, KAC serves county governments through: legislative representation, technical assistance, leadership, and professional education.

###

Click below to connect to Kansas Association of Counties Social Networks:

